



# Recombinant Human CLIP-associating protein 2 (CLASP2)

<b>Product Code</b>	CSB-CF005472HU
<b>Relevance</b>	Microtubule plus-end tracking protein that promotes the stabilization of dynamic microtubules (PubMed:26003921). Involved in the nucleation of noncentrosomal microtubules originating from the trans-Golgi network (TGN). Required for the polarization of the cytoplasmic microtubule arrays in migrating cells towards the leading edge of the cell. May act at the cell cortex to enhance the frequency of rescue of depolymerizing microtubules by attaching their plus-ends to cortical platforms composed of ERC1 and PHLDB2 (PubMed:16824950). This cortical microtubule stabilizing activity is regulated at least in part by phosphatidylinositol 3-kinase signaling. Also performs a similar stabilizing function at the kinetochore which is essential for the bipolar alignment of chromosomes on the mitotic spindle (PubMed:16866869, PubMed:16914514). Acts as a mediator of ERBB2-dependent stabilization of microtubules at the cell cortex.
<b>Abbreviation</b>	Recombinant Human CLASP2 protein
<b>Storage</b>	The shelf life is related to many factors, storage state, buffer ingredients, storage temperature and the stability of the protein itself. Generally, the shelf life of liquid form is 6 months at -20°C/-80°C. The shelf life of lyophilized form is 12 months at -20°C/-80°C.
<b>Uniprot No.</b>	O75122
<b>Product Type</b>	Transmembrane Protein
<b>Immunogen Species</b>	Homo sapiens (Human)
<b>Purity</b>	Greater than 90% as determined by SDS-PAGE.
<b>Sequence</b>	MRRLLICKRICDYKSFDDDEESVDGNRPSSAASAFKVPAPKTSGNPANSARKPGS AGGPKVGGASKEGGAGAVDEDDFIKAFTDVPSIQIYSSRELEETLNKIREILSDD KHDWDQRANALKKIRSLVAGAAQYDCFFQHLRLLDGALKLSAKDLRSQVVRE ACITVAHLSTVLGNKFDHGAEIVPTLFLNLPNSAKVMATSGCAAIRFIIRHTHV PRLIPLITSNCTSKSVPVRRRSFEFLDLLLQEWQTHSLERHAAVLVETIKKGIHD ADAEARVEARKTYMGLRNHFPGEAETLYNSLEPSYQKSLQTYLKSSGSVASLP QSDRSSSSSQESLNRPFSSKWSTANPSTVAGRVSAAGSSKASSLPGLSLQRSRS DIDVNAAAGAKAHHAAAGQSVRSRGLGAGALNAGSYASLECEAFWRSGRATAKL YSV
<b>Research Area</b>	Cell Biology
<b>Source</b>	in vitro E.coli expression system
<b>Target Names</b>	CLASP2
<b>Protein Names</b>	Cytoplasmic linker-associated protein 2 Protein Orbit homolog 2 Short name: hOrbit2
<b>Expression Region</b>	1-431aa



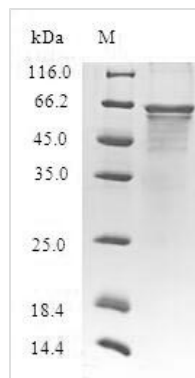
**Notes** Repeated freezing and thawing is not recommended. Store working aliquots at 4°C for up to one week.

**Tag Info** N-terminal 6xHis-B2M-tagged

**Mol. Weight** 60.5kDa

**Protein Length** Full Length of Isoform 2

**Image**



(Tris-Glycine gel) Discontinuous SDS-PAGE (reduced) with 5% enrichment gel and 15% separation gel.

**Reconstitution** We recommend that this vial be briefly centrifuged prior to opening to bring the contents to the bottom. Please reconstitute protein in deionized sterile water to a concentration of 0.1-1.0 mg/mL. We recommend to add 5-50% of glycerol (final concentration) and aliquot for long-term storage at -20°C/-80°C. Our default final concentration of glycerol is 50%. Customers could use it as reference.

**Shelf Life** The shelf life is related to many factors, storage state, buffer ingredients, storage temperature and the stability of the protein itself. Generally, the shelf life of liquid form is 6 months at -20°C/-80°C. The shelf life of lyophilized form is 12 months at -20°C/-80°C.