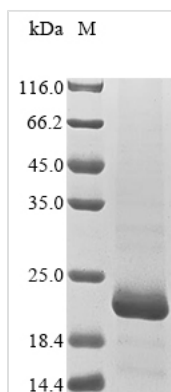




Recombinant Drosophila melanogaster Probable insulin-like peptide 7 (Ilp7)

Product Code	CSB-BP895238DLU
Abbreviation	Recombinant Drosophila melanogaster Ilp7 protein
Storage	The shelf life is related to many factors, storage state, buffer ingredients, storage temperature and the stability of the protein itself. Generally, the shelf life of liquid form is 6 months at -20°C/-80°C. The shelf life of lyophilized form is 12 months at -20°C/-80°C.
Uniprot No.	Q9W4Q9
Form	Liquid or Lyophilized powder
Storage Buffer	If the delivery form is liquid, the default storage buffer is Tris/PBS-based buffer, 5%-50% glycerol. If the delivery form is lyophilized powder, the buffer before lyophilization is Tris/PBS-based buffer, 6% Trehalose.
Product Type	Recombinant Proteins
Immunogen Species	Drosophila melanogaster (Fruit fly)
Purity	Greater than 85% as determined by SDS-PAGE.
Sequence	LQHTEEGLEMLFRERSQSDWENVWHQETHSRCRDKLVRLQLYWACEKDIYRL TRRNKKRTGNDEAWIKKTTTEPDGSTWLHVNYANMFLRSRRSDGNTPSISNE CCTKAGCTWEEYAEYCPSNKRNRHY
Research Area	Immunology
Source	Baculovirus
Target Names	Ilp7
Protein Names	Recommended name: Probable insulin-like peptide 7 Short name= dILP7 Alternative name(s): Insulin-related peptide 7 Cleaved into the following 2 chains: 1. Probable insulin-like peptide 7 A chain 2. Probable insulin-like peptide 7 B
Expression Region	32-159aa
Notes	Repeated freezing and thawing is not recommended. Store working aliquots at 4°C for up to one week.
Tag Info	N-terminal 10xHis-tagged and C-terminal Myc-tagged
Mol. Weight	19.3 kDa
Protein Length	Full Length of Mature Protein
Image	



(Tris-Glycine gel) Discontinuous SDS-PAGE (reduced) with 5% enrichment gel and 15% separation gel.

Reconstitution

We recommend that this vial be briefly centrifuged prior to opening to bring the contents to the bottom. Please reconstitute protein in deionized sterile water to a concentration of 0.1-1.0 mg/mL. We recommend to add 5-50% of glycerol (final concentration) and aliquot for long-term storage at -20°C/-80°C. Our default final concentration of glycerol is 50%. Customers could use it as reference.

Shelf Life

The shelf life is related to many factors, storage state, buffer ingredients, storage temperature and the stability of the protein itself. Generally, the shelf life of liquid form is 6 months at -20°C/-80°C. The shelf life of lyophilized form is 12 months at -20°C/-80°C.