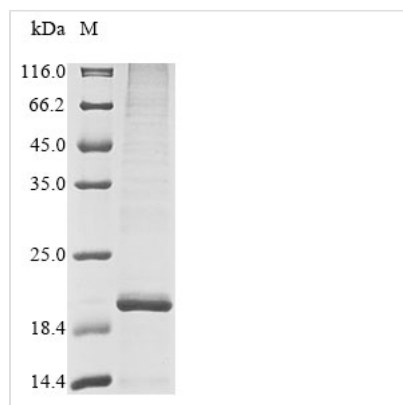




Recombinant Human Sal-like protein 4 (SALL4), partial

Product Code	CSB-BP892126HU(M)
Abbreviation	Recombinant Human SALL4 protein, partial
Storage	The shelf life is related to many factors, storage state, buffer ingredients, storage temperature and the stability of the protein itself. Generally, the shelf life of liquid form is 6 months at -20°C/-80°C. The shelf life of lyophilized form is 12 months at -20°C/-80°C.
Uniprot No.	Q9UJQ4
Product Type	Recombinant Proteins
Immunogen Species	Homo sapiens (Human)
Purity	Greater than 85% as determined by SDS-PAGE.
Sequence	PKEILAPSVNVDPVVWNQYTSMLNGGLAVKTNEISVIQSGGVPTLPVSLGATSV VNNATVSKMDGSQSGISADVEKPSATDGVPKHQFPHFLEENKIAVS
Research Area	Developmental Biology
Source	Baculovirus
Target Names	SALL4
Expression Region	954-1053aa+11R
Notes	Repeated freezing and thawing is not recommended. Store working aliquots at 4°C for up to one week.
Tag Info	N-terminal 10xHis-tagged and C-terminal Myc-tagged
Mol. Weight	16
Protein Length	Partial

Image



(Tris-Glycine gel) Discontinuous SDS-PAGE (reduced) with 5% enrichment gel and 15% separation gel.

Description

Insertion of the gene encoding the Human SALL4 protein (954-1053aa+11R) into a plasmid vector results in the formation of recombinant plasmid, which is



then introduced into baculovirus cells. Positive baculovirus cells are selected relying on their ability to survive in the presence of a specific antibiotic. The baculovirus cells containing the recombinant plasmid are cultured under conditions conducive to the expression of the gene of interest. A N-terminal 10xHis tag and C-terminal Myc tag is attached to the protein. Following expression, the recombinant Human SALL4 protein is isolated and purified from the cell lysate through affinity purification. The resultant recombinant Human SALL4 protein is analyzed using denaturing SDS-PAGE, revealing a purity greater than 85%.

Shelf Life

The shelf life is related to many factors, storage state, buffer ingredients, storage temperature and the stability of the protein itself. Generally, the shelf life of liquid form is 6 months at -20°C/-80°C. The shelf life of lyophilized form is 12 months at -20°C/-80°C.