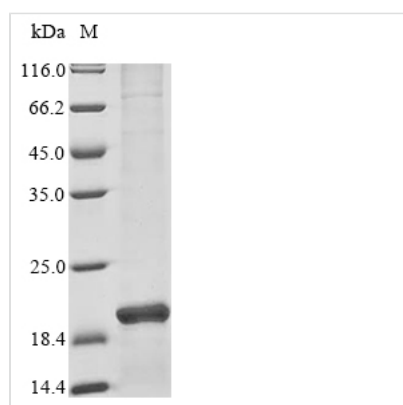




Recombinant Human Iron-sulfur cluster assembly enzyme ISCU, mitochondrial (ISCU)

Product Code	CSB-BP887955HU
Abbreviation	Recombinant Human ISCU protein
Storage	The shelf life is related to many factors, storage state, buffer ingredients, storage temperature and the stability of the protein itself. Generally, the shelf life of liquid form is 6 months at -20°C/-80°C. The shelf life of lyophilized form is 12 months at -20°C/-80°C.
Uniprot No.	Q9H1K1
Product Type	Recombinant Proteins
Immunogen Species	Homo sapiens (Human)
Purity	Greater than 90% as determined by SDS-PAGE.
Sequence	YHKKVVDHYENPRNVGSLDKTSKNVGTGLVGAPACGDVMKLQIQVDEKGIKIV DARFKTFGCGSAIASSSLATEWVKGKTVEEALTIKNTDIAKELCLPPVKLHCSM LAEDAIIKAALADYKLKQEPKKGEAEKK
Research Area	Metabolism
Source	Baculovirus
Target Names	ISCU
Protein Names	Recommended name: Iron-sulfur cluster assembly enzyme ISCU, mitochondrial Alternative name(s): NifU-like N-terminal domain-containing protein NifU-like protein
Expression Region	35-167aa
Notes	Repeated freezing and thawing is not recommended. Store working aliquots at 4°C for up to one week.
Tag Info	N-terminal 10xHis-tagged and C-terminal Myc-tagged
Mol. Weight	18.3
Protein Length	Full Length of Mature Protein

Image



(Tris-Glycine gel) Discontinuous SDS-PAGE (reduced) with 5% enrichment gel and 15% separation gel.



Shelf Life

The shelf life is related to many factors, storage state, buffer ingredients, storage temperature and the stability of the protein itself.

Generally, the shelf life of liquid form is 6 months at -20°C/-80°C. The shelf life of lyophilized form is 12 months at -20°C/-80°C.