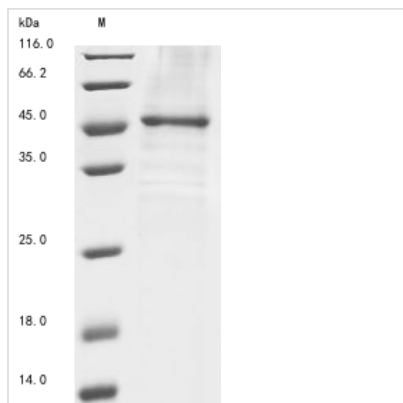




Recombinant Human Kelch domain-containing protein 3 (KLHDC3)

Product Code	CSB-BP858414HU
Abbreviation	Recombinant Human KLHDC3 protein
Storage	The shelf life is related to many factors, storage state, buffer ingredients, storage temperature and the stability of the protein itself. Generally, the shelf life of liquid form is 6 months at -20°C/-80°C. The shelf life of lyophilized form is 12 months at -20°C/-80°C.
Uniprot No.	Q9BQ90
Product Type	Recombinant Proteins
Immunogen Species	Homo sapiens (Human)
Purity	Greater than 85% as determined by SDS-PAGE.
Sequence	MLRWTVHLEGGPRRVNHA AVAVGHRVYSFGGYCSGEDYETLRQIDVHIFNAV SLRWTKLPPVKS AIRGQAPVVPYMRYGHSTVLIDDTVLLWGGRNDTEGACNV LYAFDVNTHKWF TPRVSGTVPGARDGHSACVLGKIMYIFGGYEQQADCFSNDI HKLDTSTMTWT LICTKGSPARWRDFHSATMLGSHMYVFGGRADRF GPFHSN NEIYCNRI RVFDTRTEAWLDCPPTPVLPEGRRSHSAFGYNGELYIFGGYNARL NRHFHDLWKFN PVSFTWKKIEPKGKGPCPRRRQCCIVGDKIVLFGGTSPSP EEGLGDEFDLIDHSDLHILDFSPSLKTLCKLAVIQYNLDQSCLPHDIRWELNAMT TNSNISRP IVSSHG
Research Area	Epigenetics and Nuclear Signaling
Source	Baculovirus
Target Names	KLHDC3
Protein Names	Recommended name: Kelch domain-containing protein 3 Alternative name(s): Protein Peas Testis intracellular mediator protein
Expression Region	1-382aa
Notes	Repeated freezing and thawing is not recommended. Store working aliquots at 4°C for up to one week.
Tag Info	N-terminal 10xHis-tagged and C-terminal Myc-tagged
Mol. Weight	47
Protein Length	Full Length
Image	



(Tris-Glycine gel) Discontinuous SDS-PAGE (reduced) with 5% enrichment gel and 15% separation gel.

Shelf Life

The shelf life is related to many factors, storage state, buffer ingredients, storage temperature and the stability of the protein itself. Generally, the shelf life of liquid form is 6 months at -20°C/-80°C. The shelf life of lyophilized form is 12 months at -20°C/-80°C.