



Recombinant Human Extracellular serine/threonine protein kinase FAM20C (FAM20C)

| | |
|--------------------------|--|
| Product Code | CSB-BP816901HU |
| Relevance | Golgi serine/threonine protein kinase that phosphorylates secretory pathway proteins within Ser-x-Glu/pSer motifs and plays a key role in biomineralization of bones and teeth. Constitutes the main protein kinase for extracellular proteins, generating the majority of the extracellular phosphoproteome. Mainly phosphorylates proteins within the Ser-x-Glu/pSer motif, but also displays a broader substrate specificity. Phosphorylates casein as well as a number of proteins involved in biomineralization such as AMELX, AMTN, ENAM and SPP1. In addition to its role in biomineralization, also plays a role in lipid homeostasis, wound healing and cell migration and adhesion |
| Abbreviation | Recombinant Human FAM20C protein |
| Storage | The shelf life is related to many factors, storage state, buffer ingredients, storage temperature and the stability of the protein itself. Generally, the shelf life of liquid form is 6 months at -20°C/-80°C. The shelf life of lyophilized form is 12 months at -20°C/-80°C. |
| Uniprot No. | Q8IXL6 |
| Product Type | Recombinant Protein |
| Immunogen Species | Homo sapiens (Human) |
| Purity | Greater than 85% as determined by SDS-PAGE. |
| Sequence | DFSSDPSSNLSSHLEKLPPAAEPAERALRGRDPGALRPHDPAHRPLLDPG PRRSESPPGPGGDASLLARLFEHPLYRVAVPPLTEEDVLFNVNSDTRLSPKAA ENPDWPHAGAEGAEFLSPGEAAVDSYPNWLKFHIGINRYELYSRHNPAIEALL HDLSSQRITSVAMKSGGTQLKLIMTFQNYGQALFKPMKQTREQETPPDFFYFS DYERHNAEIAAFHLDRILDFRRVPPVAGRMVNMTEIRDVTRDKKLWRTFFISP ANNICFYGECSYYCSTEHALCGKPDQIEGSLAFLPDLSLAKRKTWRNPWRRS YHKRKKAEWEVDPDYCEEVKQTPPYDSSHRILDVMDMTIFDFLMGNMDRHHY ETFEKFGNETFIIHLDNNGRGFGKYSHDELSILVPLQQCCRIRKSTYLRLQLLAKE EYKLSLLMAESLRGDQVAPVLYQPHLEALDRRLRVVLKAVRDCVERNGLHSVV DDDLDTTEHRAASAR |
| Research Area | Others |
| Source | Baculovirus |
| Target Names | FAM20C |
| Protein Names | Dentin matrix protein 4 (DMP-4) (Golgi casein kinase) (Golgi-enriched fraction casein kinase) (DMP4) (GEF-CK) |
| Expression Region | 93-584aa |
| Notes | Repeated freezing and thawing is not recommended. Store working aliquots at 4°C for up to one week. |

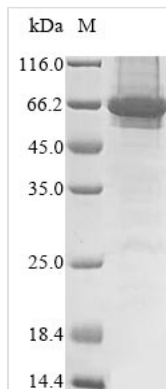


Tag Info N-terminal 10xHis-tagged and C-terminal Myc-tagged

Mol. Weight 60.4 kDa

Protein Length Full Length of Mature Protein

Image



(Tris-Glycine gel) Discontinuous SDS-PAGE (reduced) with 5% enrichment gel and 15% separation gel.

Reconstitution We recommend that this vial be briefly centrifuged prior to opening to bring the contents to the bottom. Please reconstitute protein in deionized sterile water to a concentration of 0.1-1.0 mg/mL. We recommend to add 5-50% of glycerol (final concentration) and aliquot for long-term storage at -20°C/-80°C. Our default final concentration of glycerol is 50%. Customers could use it as reference.

Shelf Life The shelf life is related to many factors, storage state, buffer ingredients, storage temperature and the stability of the protein itself. Generally, the shelf life of liquid form is 6 months at -20°C/-80°C. The shelf life of lyophilized form is 12 months at -20°C/-80°C.