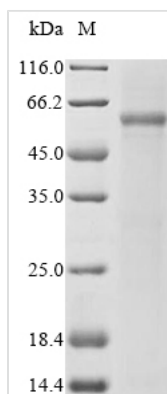




Recombinant Human Astacin-like metalloendopeptidase (ASTL)

Product Code	CSB-BP760708HU
Abbreviation	Recombinant Human ASTL protein
Storage	The shelf life is related to many factors, storage state, buffer ingredients, storage temperature and the stability of the protein itself. Generally, the shelf life of liquid form is 6 months at -20°C/-80°C. The shelf life of lyophilized form is 12 months at -20°C/-80°C.
Uniprot No.	Q6HA08
Product Type	Recombinant Proteins
Immunogen Species	Homo sapiens (Human)
Purity	Greater than 85% as determined by SDS-PAGE.
Sequence	APLASSCAGACGTSFPDGLTPEGTQASGDKDIPAINQGLILEETPESSFLIEGDII RPSPFRLLSATSNNKWPMMGGSGVVEVPFLLSSKYDEPSRQVILEALAEFERSTCI RFVTYQDQRDFISIIPMYGCFSSVGRSGGMQVVS LAPTCLQKGRGIVLHELMH VLGFWHEHTRADRDYIRVNWNEILPGFEINFIKSQSSNMLTPYDYSSVMHYG RLAFSRRGLPTITPLWAPSVHIGQRWNLSASDITRVLKLYGCSPSGPRPRGRG SHAHSTGRSPAPASLSLQRLLEALSAESRSPDPSGSSAGGQVPVAGPGESPH GWESPALKKLSAEASARQPQTLASSPRSRPGAGAPGVAQEQSWLAGVSTKP TVPSSEAGIQPVPVQGGSPALPGGCVPRNHFKGMSED
Research Area	Others
Source	Baculovirus
Target Names	ASTL
Protein Names	Recommended name: Astacin-like metalloendopeptidase EC= 3.4.-.- Alternative name(s): Oocyte astacin Ovastacin
Expression Region	24-431aa
Notes	Repeated freezing and thawing is not recommended. Store working aliquots at 4°C for up to one week.
Tag Info	N-terminal 10xHis-tagged and C-terminal Myc-tagged
Mol. Weight	47.6 kDa
Protein Length	Full Length of Mature Protein
Image	



(Tris-Glycine gel) Discontinuous SDS-PAGE (reduced) with 5% enrichment gel and 15% separation gel.

Shelf Life

The shelf life is related to many factors, storage state, buffer ingredients, storage temperature and the stability of the protein itself. Generally, the shelf life of liquid form is 6 months at -20°C/-80°C. The shelf life of lyophilized form is 12 months at -20°C/-80°C.