

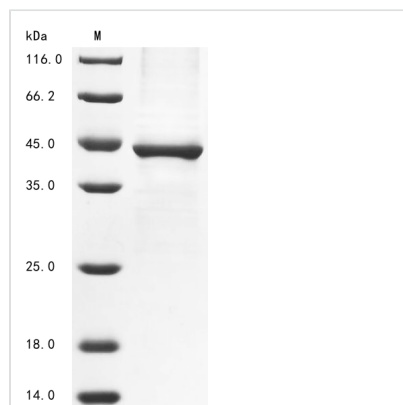


Recombinant Dog Phospholipase A2 group XV (PLA2G15)

Product Code	CSB-BP747694DO
Abbreviation	Recombinant Dog PLA2G15 protein
Storage	The shelf life is related to many factors, storage state, buffer ingredients, storage temperature and the stability of the protein itself. Generally, the shelf life of liquid form is 6 months at -20°C/-80°C. The shelf life of lyophilized form is 12 months at -20°C/-80°C.
Uniprot No.	Q6XPZ3
Form	Liquid or Lyophilized powder
Storage Buffer	If the delivery form is liquid, the default storage buffer is Tris/PBS-based buffer, 5%-50% glycerol.If the delivery form is lyophilized powder, the buffer before lyophilization is Tris/PBS-based buffer, 6% Trehalose.
Product Type	Recombinant Proteins
Immunogen Species	Canis lupus familiaris (Dog) (Canis familiaris)
Purity	Greater than 85% as determined by SDS-PAGE.
Sequence	RRPPVVLVPGDLGNQLEAKLDKPTVVHYLCSKRTESYFTLWLNLELLLPIIDC WIDNIRLVYNRTSRATQFPDGVDRVPGFGKTFSLFLDPSKSSVGSYFHTMV ESLVDWGYIRGEDVRGAPYDWRRAPNENGPYFLALREMIEEMYQLYGGPVVL VAHSMGNMYTLYFLQRQPQAWKNKYIAFVALGAPWGGVAKTLRVLASGDN NRIPVIRPLKIREQQRSAVSTSWLLPYNYTWSPEKIFVHTPTANYTLRDYHQFF QDIGFKDGLMRQDTEGLVEAMVPPGVPLHCLYGTGVPTPDSFYYESFPDRD PKICFGDGDGTVNLQSAQCQAWRGHQEHQVSLQALPGSEHIEMLANATTLA YLKRVLLGP
Research Area	Epigenetics and Nuclear Signaling
Source	Baculovirus
Target Names	PLA2G15
Protein Names	Recommended name: Group XV phospholipase A2 EC= 2.3.1.-Alternative name(s): 1-O-acylceramide synthase Short name= ACS LCAT-like lysophospholipase Short name= LLPL Lysophospholipase 3 Lysosomal phospholipase A2 Short nam
Expression Region	32-408aa
Notes	Repeated freezing and thawing is not recommended. Store working aliquots at 4°C for up to one week.
Tag Info	N-terminal 10xHis-tagged and C-terminal Myc-tagged
Mol. Weight	46.8 kDa
Protein Length	Full Length of Mature Protein



Image



(Tris-Glycine gel) Discontinuous SDS-PAGE (reduced) with 5% enrichment gel and 15% separation gel.

Reconstitution

We recommend that this vial be briefly centrifuged prior to opening to bring the contents to the bottom. Please reconstitute protein in deionized sterile water to a concentration of 0.1-1.0 mg/mL. We recommend to add 5-50% of glycerol (final concentration) and aliquot for long-term storage at -20°C/-80°C. Our default final concentration of glycerol is 50%. Customers could use it as reference.

Shelf Life

The shelf life is related to many factors, storage state, buffer ingredients, storage temperature and the stability of the protein itself.

Generally, the shelf life of liquid form is 6 months at -20°C/-80°C. The shelf life of lyophilized form is 12 months at -20°C/-80°C.