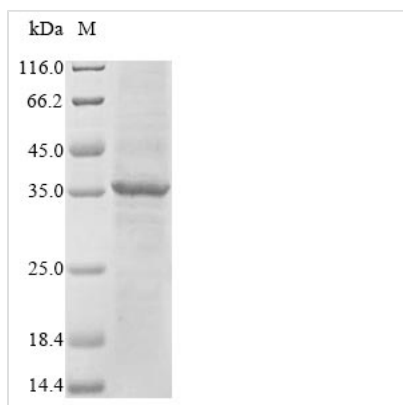


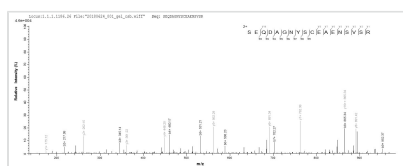


Recombinant Human Fc receptor-like protein 6 (FCRL6), partial

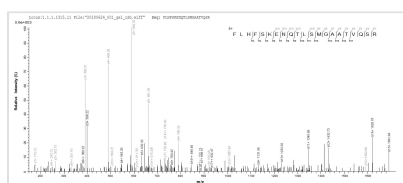
Product Code	CSB-BP718779HU
Abbreviation	Recombinant Human FCRL6 protein, partial
Storage	The shelf life is related to many factors, storage state, buffer ingredients, storage temperature and the stability of the protein itself. Generally, the shelf life of liquid form is 6 months at -20°C/-80°C. The shelf life of lyophilized form is 12 months at -20°C/-80°C.
Uniprot No.	Q6DN72
Product Type	Recombinant Protein
Immunogen Species	Homo sapiens (Human)
Purity	Greater than 85% as determined by SDS-PAGE.
Sequence	LYLQAWPNPVFEGDALTLRCQGWKNTPLSQVKFYRDGKFLHFSKENQTLISM GAATVQSRGQYSCSGQVMYIPQTFTQTSETAMVQVQELFPPPVLSAIPSPEPR EGSLVTLRCQTKLHPLRSALRLLFSFHKDGHTLQDRGPHPELCIPGAKEGDSG LYWCEVAPEGGQVQKQSPQLEVRVQAPVSRPVLTLHHGPADPAVGDMVQLL CEAQRGSPPILYSFYLDEKIVGNHSAPCGGTTSLLPVKSEQDAGNYSCEAEN SVSRERSEPKKLSLKGSQVLFTPASNW
Research Area	Immunology
Source	Baculovirus
Target Names	FCRL6
Protein Names	Recommended name: Fc receptor-like protein 6 Short name= FcR-like protein 6 Short name= FcRL6 Alternative name(s): Fc receptor homolog 6 Short name= FcRH6 IFGP6
Expression Region	20-307aa
Notes	Repeated freezing and thawing is not recommended. Store working aliquots at 4°C for up to one week.
Tag Info	N-terminal 10xHis-tagged
Mol. Weight	34.2 kDa
Protein Length	Extracellular Domain
Image	



(Tris-Glycine gel) Discontinuous SDS-PAGE (reduced) with 5% enrichment gel and 15% separation gel.



Based on the SEQUEST from database of Baculovirus host and target protein, the LC-MS/MS Analysis result of CSB-BP718779HU could indicate that this peptide derived from Baculovirus-expressed Homo sapiens (Human) FCRL6.



Based on the SEQUEST from database of Baculovirus host and target protein, the LC-MS/MS Analysis result of CSB-BP718779HU could indicate that this peptide derived from Baculovirus-expressed Homo sapiens (Human) FCRL6.

Reconstitution

We recommend that this vial be briefly centrifuged prior to opening to bring the contents to the bottom. Please reconstitute protein in deionized sterile water to a concentration of 0.1-1.0 mg/mL. We recommend to add 5-50% of glycerol (final concentration) and aliquot for long-term storage at -20°C/-80°C. Our default final concentration of glycerol is 50%. Customers could use it as reference.

Shelf Life

The shelf life is related to many factors, storage state, buffer ingredients, storage temperature and the stability of the protein itself. Generally, the shelf life of liquid form is 6 months at -20°C/-80°C. The shelf life of lyophilized form is 12 months at -20°C/-80°C.