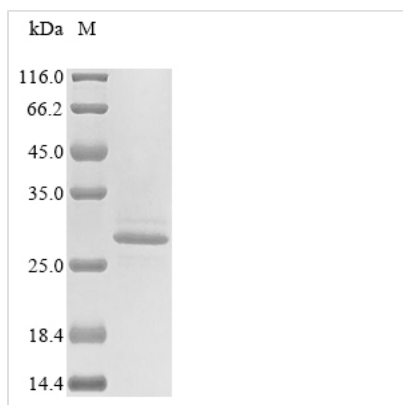




# Recombinant Human Chymotrypsin-like elastase family member 2B (CELA2B)

<b>Product Code</b>	CSB-BP362355HU
<b>Abbreviation</b>	Recombinant Human CELA2B protein
<b>Storage</b>	The shelf life is related to many factors, storage state, buffer ingredients, storage temperature and the stability of the protein itself. Generally, the shelf life of liquid form is 6 months at -20°C/-80°C. The shelf life of lyophilized form is 12 months at -20°C/-80°C.
<b>Uniprot No.</b>	P08218
<b>Product Type</b>	Recombinant Proteins
<b>Immunogen Species</b>	Homo sapiens (Human)
<b>Purity</b>	Greater than 85% as determined by SDS-PAGE.
<b>Sequence</b>	MLGGEEARPNSWPWQVSLQYSSNGQWYHTCGGSLIANSWVLTAAHCISSSG IYRVMLGQHNLVVAESGSLAVSVSKIVVHKDWNSDQVSKGNDIALLLKLANPVS LTDKIQLACLPPAGTILPNNYPCYVTGWGRLQTNGALPDDLKQGQLLVVDYAT CSSSGWWGSTVKTNMICAGGDGVICTCNGDSGGPLNCQASDGRWEVHGIG SLTSVLGCNYYYKPSIFTRVSNYNDWINSVIANN
<b>Research Area</b>	Cell Biology
<b>Source</b>	Baculovirus
<b>Target Names</b>	CELA2B
<b>Protein Names</b>	Recommended name: Chymotrypsin-like elastase family member 2B EC= 3.4.21.71 Alternative name(s): Elastase-2B
<b>Expression Region</b>	29-269aa
<b>Notes</b>	Repeated freezing and thawing is not recommended. Store working aliquots at 4°C for up to one week.
<b>Tag Info</b>	N-terminal 10xHis-tagged
<b>Mol. Weight</b>	28.4
<b>Protein Length</b>	Full Length of Mature Protein

**Image**



(Tris-Glycine gel) Discontinuous SDS-PAGE (reduced) with 5% enrichment gel and 15% separation gel.

## Shelf Life

The shelf life is related to many factors, storage state, buffer ingredients, storage temperature and the stability of the protein itself. Generally, the shelf life of liquid form is 6 months at -20°C/-80°C. The shelf life of lyophilized form is 12 months at -20°C/-80°C.