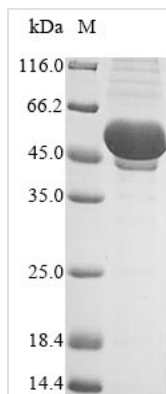




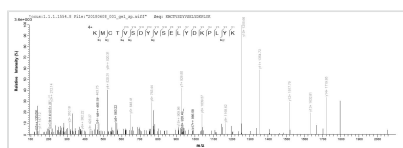
Recombinant Vaccinia virus Truncated plaque-size/host range protein (PS/HR)

Product Code	CSB-BP335028VAF
Relevance	Regulation of plaque size and host range. In this strain the truncated ps/hr protein is probably not functional.
Abbreviation	Recombinant Vaccinia virus PS/HR protein
Storage	The shelf life is related to many factors, storage state, buffer ingredients, storage temperature and the stability of the protein itself. Generally, the shelf life of liquid form is 6 months at -20°C/-80°C. The shelf life of lyophilized form is 12 months at -20°C/-80°C.
Uniprot No.	P24284
Product Type	Recombinant Protein
Immunogen Species	Vaccinia virus (strain LC16m8) (VACV)
Purity	Greater than 85% as determined by SDS-PAGE.
Sequence	YSTCTVPTMNNAKLTSTETSFNDKQKVTFCTDQGYHSLDPNAVCECTDKWKYE NPCKKMCTVSDYVSELYDKPLYK
Research Area	Others
Source	Baculovirus
Target Names	PS/HR
Protein Names	Protein B5
Expression Region	18-92aa
Notes	Repeated freezing and thawing is not recommended. Store working aliquots at 4°C for up to one week.
Tag Info	N-terminal MBP-tagged and C-terminal 6xHis-tagged
Mol. Weight	52.6 kDa
Protein Length	Full Length of Mature Protein

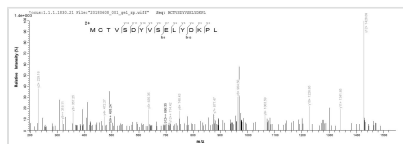
Image



(Tris-Glycine gel) Discontinuous SDS-PAGE (reduced) with 5% enrichment gel and 15% separation gel.



Based on the SEQUEST from database of Baculovirus host and target protein, the LC-MS/MS Analysis result of CSB-BP335028VAF could indicate that this peptide derived from Baculovirus-expressed Vaccinia virus (strain LC16m8) (VACV) PS/HR.



Based on the SEQUEST from database of Baculovirus host and target protein, the LC-MS/MS Analysis result of CSB-BP335028VAF could indicate that this peptide derived from Baculovirus-expressed Vaccinia virus (strain LC16m8) (VACV) PS/HR.

Reconstitution

We recommend that this vial be briefly centrifuged prior to opening to bring the contents to the bottom. Please reconstitute protein in deionized sterile water to a concentration of 0.1-1.0 mg/mL. We recommend to add 5-50% of glycerol (final concentration) and aliquot for long-term storage at -20°C/-80°C. Our default final concentration of glycerol is 50%. Customers could use it as reference.

Shelf Life

The shelf life is related to many factors, storage state, buffer ingredients, storage temperature and the stability of the protein itself. Generally, the shelf life of liquid form is 6 months at -20°C/-80°C. The shelf life of lyophilized form is 12 months at -20°C/-80°C.