



Recombinant Human ATP-dependent DNA helicase Q1 (RECQL)

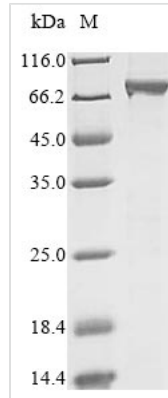
Product Code	CSB-BP019537HU
Relevance	DNA helicase that may play a role in the repair of DNA that is damaged by ultraviolet light or other mutagens. Exhibits a magnesium-dependent ATP-dependent DNA-helicase activity that unwinds single- and double-stranded DNA in a 3'-5' direction.
Abbreviation	Recombinant Human RECQL protein
Storage	The shelf life is related to many factors, storage state, buffer ingredients, storage temperature and the stability of the protein itself. Generally, the shelf life of liquid form is 6 months at -20°C/-80°C. The shelf life of lyophilized form is 12 months at -20°C/-80°C.
Uniprot No.	P46063
Product Type	Recombinant Protein
Immunogen Species	Homo sapiens (Human)
Purity	Greater than 85% as determined by SDS-PAGE.
Sequence	MASVSALTEELDSITSELHAVEIIQIQELTERQQELIQKKKVLTKKIKQCLEDSDA GASNEYDSSPAAWNKEDFPWSGKVKDILQNVFKLEKFRPLQLETINVTMAGKE VFLVMPTGGGKSLCYQLPALCSDGFTLVICPLISLMEDQLMVLKQLGISATMLN ASSSKEHVKKWVHAEMVNKNSELKLIYVTPEKIAKSKMFMSRLEKAYEARRFTRI AVDEVHCCSQWGHDFRPDYKALGILKRQFPNASLIGLTATATNHVLTDAQKILC IEKCFTFTASFNRPNLYYEVQRKPSNTEDFIEDIVKLINGRYKGQSGIYCFSSQK DSEQVTVSLQNLGIHAGAYHANLEPEDKTTVHRKWSANEIQVVVATVAFGMGI DKPDVRFVIHHSMSKSMENYYQESGRAGRDDMKADCILYYGFGDIFRISSMVV MENVGQQKLYEMVSYCQNISKCRRLVMAQHFDDEVWNSEACNKMCDNCKD SAFERKNITEYCRDLIKLKQAEELNEKLTPLKLIDSWMGKGAALKRVAGVVAPT LPREDLEKIIAHFLIQQLKEDYSFTAYATISYLGKIPKANLLNNEAHAITMQVTK STQNSFRAESSQTCHSEQGDKKMEEKNSGNFQKKAANMLQQSGSKNTGAKK RKIDDA
Research Area	Epigenetics and Nuclear Signaling
Source	Baculovirus
Target Names	RECQL
Protein Names	DNA helicase, RecQ-like type 1 Short name: RecQ1 DNA-dependent ATPase Q1 RecQ protein-like 1 RECQ1, RECQL1
Expression Region	1-649aa
Notes	Repeated freezing and thawing is not recommended. Store working aliquots at 4°C for up to one week.
Tag Info	N-terminal 10xHis-tagged



Mol. Weight 76.0 kDa

Protein Length Full Length

Image



(Tris-Glycine gel) Discontinuous SDS-PAGE (reduced) with 5% enrichment gel and 15% separation gel.

Description

The plasmid vector incorporates the gene encoding the Human RECQL protein (1-649aa), generating recombinant plasmid, which is then introduced into baculovirus cells. Selection of positive baculovirus cells is based on their capacity to withstand a particular antibiotic. Subsequently, the baculovirus cells containing the recombinant plasmid are cultivated under conditions that facilitate the expression of the Human RECQL gene. The protein carries a N-terminal 10xHis tag. Following expression, affinity purification is employed to isolate and purify the recombinant Human RECQL protein from the cell lysate. Denaturing SDS-PAGE is used to resolve the resulting recombinant protein, enabling an estimation of its purity, exceeding 85%.

Reconstitution

We recommend that this vial be briefly centrifuged prior to opening to bring the contents to the bottom. Please reconstitute protein in deionized sterile water to a concentration of 0.1-1.0 mg/mL. We recommend to add 5-50% of glycerol (final concentration) and aliquot for long-term storage at -20°C/-80°C. Our default final concentration of glycerol is 50%. Customers could use it as reference.

Shelf Life

The shelf life is related to many factors, storage state, buffer ingredients, storage temperature and the stability of the protein itself. Generally, the shelf life of liquid form is 6 months at -20°C/-80°C. The shelf life of lyophilized form is 12 months at -20°C/-80°C.