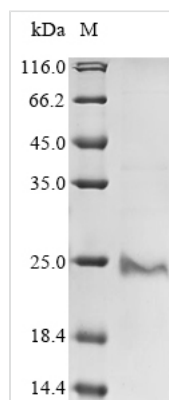




# Recombinant Human Protein PML (PML), partial

<b>Product Code</b>	CSB-BP018236HU
<b>Abbreviation</b>	Recombinant Human PML protein, partial
<b>Storage</b>	The shelf life is related to many factors, storage state, buffer ingredients, storage temperature and the stability of the protein itself. Generally, the shelf life of liquid form is 6 months at -20°C/-80°C. The shelf life of lyophilized form is 12 months at -20°C/-80°C.
<b>Uniprot No.</b>	P29590
<b>Product Type</b>	Recombinant Proteins
<b>Immunogen Species</b>	Homo sapiens (Human)
<b>Purity</b>	Greater than 85% as determined by SDS-PAGE.
<b>Sequence</b>	QCQAEAKCPKLLPCLHTLCSGCLEASGMQCPICQAPWPLGADTPALDNLVFFE SLQRRLSVYRQIVDAQAVCTRCKESADFWCFECEQLLCAKCFEAHQWFLKHE ARPLAELRNQSVREFLDGTRKTNNIFCSNPNHRTPTLTISIYCRGCSKPLCCSC ALLDSSHSELKCDISAEIQQRQEE
<b>Research Area</b>	Cancer
<b>Source</b>	Baculovirus
<b>Target Names</b>	PML
<b>Protein Names</b>	Recommended name: Protein PML Alternative name(s): Promyelocytic leukemia protein RING finger protein 71 Tripartite motif-containing protein 19
<b>Expression Region</b>	59-239aa
<b>Notes</b>	Repeated freezing and thawing is not recommended. Store working aliquots at 4°C for up to one week.
<b>Tag Info</b>	N-terminal 10xHis-tagged and C-terminal Myc-tagged
<b>Mol. Weight</b>	24.5
<b>Protein Length</b>	Partial

## Image



(Tris-Glycine gel) Discontinuous SDS-PAGE (reduced) with 5% enrichment gel and 15% separation gel.

## Description



The plasmid vector incorporates the gene encoding the Human PML protein (59-239aa), generating recombinant plasmid, which is then introduced into baculovirus cells. Selection of positive baculovirus cells is based on their capacity to withstand a particular antibiotic. Subsequently, the baculovirus cells containing the recombinant plasmid are cultivated under conditions that facilitate the expression of the Human PML gene. The protein carries a N-terminal 10xHis tag and C-terminal Myc tag. Following expression, affinity purification is employed to isolate and purify the recombinant Human PML protein from the cell lysate. Denaturing SDS-PAGE is used to resolve the resulting recombinant protein, enabling an estimation of its purity, exceeding 85%.

---

**Shelf Life**

The shelf life is related to many factors, storage state, buffer ingredients, storage temperature and the stability of the protein itself. Generally, the shelf life of liquid form is 6 months at -20°C/-80°C. The shelf life of lyophilized form is 12 months at -20°C/-80°C.