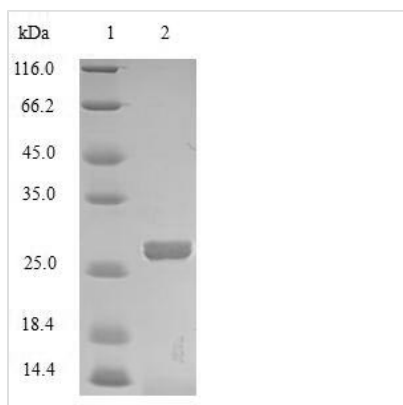




Recombinant Bovine Mannose-binding protein C (MBL)

Product Code	CSB-BP013540BO
Relevance	Calcium-dependent lectin involved in innate immune defense. Binds mannose, fucose and N-acetylglucosamine on different microorganisms and activates the lectin complement pathway. Binds to late apoptotic cells, as well as to apoptotic blebs and to necrotic cells, but not to early apoptotic cells, facilitating their uptake by macrophages
Abbreviation	Recombinant Bovine MBL protein
Storage	The shelf life is related to many factors, storage state, buffer ingredients, storage temperature and the stability of the protein itself. Generally, the shelf life of liquid form is 6 months at -20°C/-80°C. The shelf life of lyophilized form is 12 months at -20°C/-80°C.
Uniprot No.	O02659
Product Type	Recombinant Protein
Immunogen Species	Bos taurus (Bovine)
Purity	Greater than 85% as determined by SDS-PAGE.
Sequence	DTETENCENIRKTCPIACGPPGINGIPGKDGRDGAKGEKGEPGQGLRGSQG PPGKMGPQGTPGIPGIPGPIGQKGDPGENMGDYIRLATSERATLQSELNQIKN WLIFSLGKRVGKKAFFTNKGKMPFNEVKTLCAQFQGRVATPMNAEENRALKD LVTEEAFLGITDQETEGKFVDLTGKGVTYQNWNDGEPNNASPGEHCVTLTLLSD GTWNDIACSASFLTVCEFSL
Research Area	Immunology
Source	Baculovirus
Target Names	MBL
Protein Names	Mannan-binding protein
Expression Region	21-249aa
Notes	Repeated freezing and thawing is not recommended. Store working aliquots at 4°C for up to one week.
Tag Info	N-terminal 10xHis-tagged
Mol. Weight	26.9kDa
Protein Length	Full Length of Mature Protein
Image	



(Tris-Glycine gel) Discontinuous SDS-PAGE (reduced) with 5% enrichment gel and 15% separation gel.

Description

The plasmid vector incorporates the gene encoding the Bovine MBL protein (21-249aa), generating recombinant plasmid, which is then introduced into baculovirus cells. Selection of positive baculovirus cells is based on their capacity to withstand a particular antibiotic. Subsequently, the baculovirus cells containing the recombinant plasmid are cultivated under conditions that facilitate the expression of the Bovine MBL gene. The protein carries a N-terminal 10xHis tag. Following expression, affinity purification is employed to isolate and purify the recombinant Bovine MBL protein from the cell lysate. Denaturing SDS-PAGE is used to resolve the resulting recombinant protein, enabling an estimation of its purity, exceeding 85%.

Reconstitution

We recommend that this vial be briefly centrifuged prior to opening to bring the contents to the bottom. Please reconstitute protein in deionized sterile water to a concentration of 0.1-1.0 mg/mL. We recommend to add 5-50% of glycerol (final concentration) and aliquot for long-term storage at -20°C/-80°C. Our default final concentration of glycerol is 50%. Customers could use it as reference.

Shelf Life

The shelf life is related to many factors, storage state, buffer ingredients, storage temperature and the stability of the protein itself. Generally, the shelf life of liquid form is 6 months at -20°C/-80°C. The shelf life of lyophilized form is 12 months at -20°C/-80°C.