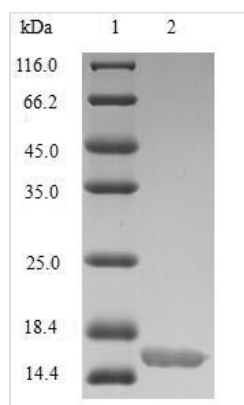




Recombinant Human Glucagon-like peptide 1 receptor (GLP1R), partial

Product Code	CSB-BP009514HU
Relevance	This is a receptor for glucagon-like peptide 1. The activity of this receptor is mediated by G proteins which activate adenyl cyclase.
Abbreviation	Recombinant Human GLP1R protein, partial
Storage	The shelf life is related to many factors, storage state, buffer ingredients, storage temperature and the stability of the protein itself. Generally, the shelf life of liquid form is 6 months at -20°C/-80°C. The shelf life of lyophilized form is 12 months at -20°C/-80°C.
Uniprot No.	P43220
Product Type	Recombinant Protein
Immunogen Species	Homo sapiens (Human)
Purity	Greater than 85% as determined by SDS-PAGE.
Sequence	RPQGATVSLWETVQKWREYRRQCQRSLTEDPPPATDLFCNRTFDEYACWPD GEPGSFVNVSCLPWYLPWASSVPQGHVYRFCTAEGWLQKDNSSLPWRLSE CEESKRGERSSPEEQLLFLY
Research Area	Neuroscience
Source	Baculovirus
Target Names	GLP1R
Expression Region	24-145aa
Notes	Repeated freezing and thawing is not recommended. Store working aliquots at 4°C for up to one week.
Tag Info	N-terminal 10xHis-tagged
Mol. Weight	16.8kDa
Protein Length	Partial

Image



(Tris-Glycine gel) Discontinuous SDS-PAGE (reduced) with 5% enrichment gel and 15% separation gel.



Description

The gene encoding the Human GLP1R protein (24-145aa) is inserted into a plasmid vector to form the recombinant plasmid, which is introduced into baculovirus cells. baculovirus cells that have successfully taken up the recombinant plasmid can be selected based on their ability to survive in the presence of a specific antibiotic. The recombinant plasmid-containing baculovirus cells are cultured under conditions that promote the expression of the interested gene. The protein is fused with a N-terminal 10xHis tag. After expression, the recombinant Human GLP1R protein is isolated and purified from the cell lysate through affinity purification. The resulting recombinant Human GLP1R protein is resolved by denaturing SDS-PAGE, allowing its purity to be estimated, greater than 85%.

Reconstitution

We recommend that this vial be briefly centrifuged prior to opening to bring the contents to the bottom. Please reconstitute protein in deionized sterile water to a concentration of 0.1-1.0 mg/mL. We recommend to add 5-50% of glycerol (final concentration) and aliquot for long-term storage at -20°C/-80°C. Our default final concentration of glycerol is 50%. Customers could use it as reference.

Shelf Life

The shelf life is related to many factors, storage state, buffer ingredients, storage temperature and the stability of the protein itself. Generally, the shelf life of liquid form is 6 months at -20°C/-80°C. The shelf life of lyophilized form is 12 months at -20°C/-80°C.