



Recombinant Human Centromere protein F (CENPF), partial

Product Code	CSB-BP005210HU
Relevance	Required for kinetochore function and chromosome segregation in mitosis. Required for kinetochore localization of dynein, LIS1, NDE1 and NDEL1. Regulates recycling of the plasma membrane by acting as a link between recycling vesicles and the microtubule network through its association with STX4 and SNAP25. Acts as a potential inhibitor of pocket protein-mediated cellular processes during development by regulating the activity of RB proteins during cell division and proliferation. May play a regulatory or permissive role in the normal embryonic cardiomyocyte cell cycle and in promoting continued mitosis in transformed, abnormally dividing neonatal cardiomyocytes. Interaction with RB directs embryonic stem cells toward a cardiac lineage. Involved in the regulation of DNA synthesis and hence cell cycle progression, via its C-terminus. Has a potential role regulating skeletal myogenesis and in cell differentiation in embryogenesis. Involved in dendritic cell regulation of T-cell immunity against chlamydia.
Abbreviation	Recombinant Human CENPF protein, partial
Storage	The shelf life is related to many factors, storage state, buffer ingredients, storage temperature and the stability of the protein itself. Generally, the shelf life of liquid form is 6 months at -20°C/-80°C. The shelf life of lyophilized form is 12 months at -20°C/-80°C.
Uniprot No.	P49454
Product Type	Recombinant Protein
Immunogen Species	Homo sapiens (Human)
Purity	Greater than 85% as determined by SDS-PAGE.
Sequence	AIQGRNESCDISKEHTSETTERTPKHDVHQICDKDAQQDLNLDIEKITETGAVK PTGECSGEQSPDTNYEPPGEDKTQGSSECISELSFSGPNALVPMDFLGNQED IHNLQLRVKETSNNELRLLHVIEDRDRKVESLLNEMKELDSKLHLQEVQLMTKI EACIELEKIVGELKKENSDDLSEKLEYFSCDHQELLQRVETSEGLNSDLEMHADK SSREDIGDNVAKVNDVSWKERFLDVENELSRIRSEKASIEHEALYLEADLEVVT EKLCKLEKDNNKQKVIVCLEEELSVVTSERNQLRGELDTMSKKTALDQLSEK MKEKTQELESHQSE
Research Area	Epigenetics and Nuclear Signaling
Source	Baculovirus
Target Names	CENPF
Protein Names	AH antigen Kinetochore protein CENPF Mitosin
Expression Region	1759-2093aa
Notes	Repeated freezing and thawing is not recommended. Store working aliquots at



4°C for up to one week.

Tag Info

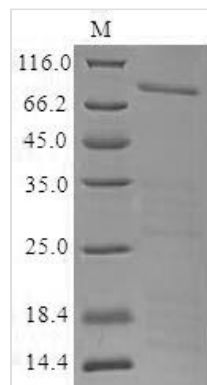
N-terminal MBP-tagged and C-terminal 6xHis-tagged

Mol. Weight

82.2 kDa

Protein Length

Partial

Image


(Tris-Glycine gel) Discontinuous SDS-PAGE (reduced) with 5% enrichment gel and 15% separation gel.

Reconstitution

We recommend that this vial be briefly centrifuged prior to opening to bring the contents to the bottom. Please reconstitute protein in deionized sterile water to a concentration of 0.1-1.0 mg/mL. We recommend to add 5-50% of glycerol (final concentration) and aliquot for long-term storage at -20°C/-80°C. Our default final concentration of glycerol is 50%. Customers could use it as reference.

Shelf Life

The shelf life is related to many factors, storage state, buffer ingredients, storage temperature and the stability of the protein itself. Generally, the shelf life of liquid form is 6 months at -20°C/-80°C. The shelf life of lyophilized form is 12 months at -20°C/-80°C.