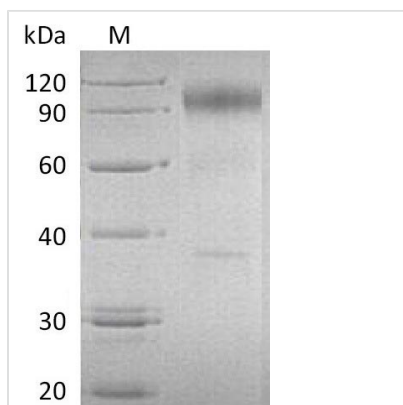




Recombinant Human Interleukin-23 receptor (IL23R), partial (Active)

Product Code	CSB-AP004371HU
Abbreviation	Recombinant Human IL23R protein, partial (Active)
Uniprot No.	Q5VWK5
Form	Lyophilized powder
Storage Buffer	Lyophilized from a 0.2 µm filtered 1xPBS, pH 7.4
Product Type	Interleukin
Immunogen Species	Homo sapiens (Human)
Biological Activity	Measured by its binding ability in a functional ELISA. Immobilized Human IL-23R-Fc at 10µg/ml can bind Human IL-23-His, the ED50 of Human IL-23-His is 0.248 ug/ml.
Purity	Greater than 90% as determined by SDS-PAGE.
Sequence	GITNINCSGHIWVEPATIFKMGMNISIYCQAAIKNCQPRKLHFKNGIKERFQITR INKTTARLWYKNFLEPHASMYCTAECPKHFQETLICGKDISSGYPPDIPDEVTC VIYEYSGNMTCTWNAGKLTYIDTKYVVHVKSLETEEEQQYLTSSYINISTDSLQ GGKKYLVVWQAANALGMEESKQLQIHLDDIVIPSAAVISRAETINATVPKTIYW DSQTTIEKVSCEMRYKATTNQTWNVKEFDTNFTYVQQSEFYLEPNIKYVFQVR CQETGKRYWQPWSSLFFHKTPETVPQVTSKAFQHDTWNSGLTVASISTGHILT SDNRGD
Research Area	Immunology
Source	Mammalian cell
Target Names	IL23R
Expression Region	24-353aa
Notes	Repeated freezing and thawing is not recommended. Store working aliquots at 4°C for up to one week.
Tag Info	C-terminal hFc-tagged
Mol. Weight	65 kDa
Protein Length	Partial
Image	



(Tris-Glycine gel) Discontinuous SDS-PAGE (reduced) with 5% enrichment gel and 15% separation gel.

Endotoxin

Less than 1.0 EU/μg as determined by LAL method.

Reconstitution

We recommend that this vial be briefly centrifuged prior to opening to bring the contents to the bottom. Please reconstitute protein in deionized sterile water to a concentration of 0.1-1.0 mg/mL. We recommend to add 5-50% of glycerol (final concentration) and aliquot for long-term storage at -20°C/-80°C. Our default final concentration of glycerol is 50%. Customers could use it as reference.

Shelf Life

The shelf life is related to many factors, storage state, buffer ingredients, storage temperature and the stability of the protein itself. Generally, the shelf life of liquid form is 6 months at -20°C/-80°C. The shelf life of lyophilized form is 12 months at -20°C/-80°C.