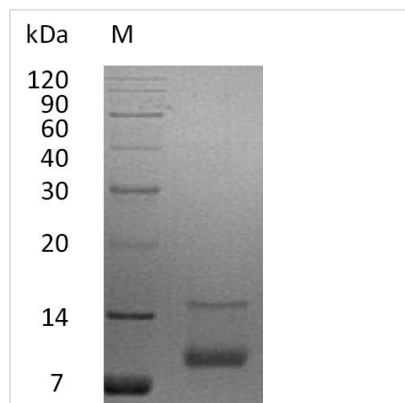




# Recombinant Human Insulin-like growth factor I (IGF1), partial (Active)

<b>Product Code</b>	CSB-AP003721HU
<b>Abbreviation</b>	Recombinant Human IGF1 protein, partial (Active)
<b>Uniprot No.</b>	P05019
<b>Form</b>	Lyophilized powder
<b>Storage Buffer</b>	Lyophilized from a 0.2 $\mu$ m Filtered 20 mM NaAc-HAC, pH 4.5
<b>Product Type</b>	Growth Factor
<b>Immunogen Species</b>	Homo sapiens (Human)
<b>Biological Activity</b>	The ED50 as determined in a serum-free cell proliferation assay using MCF?7 human breast cancer cells is 20-100 ng/ml.
<b>Purity</b>	Greater than 95% as determined by SDS-PAGE.
<b>Sequence</b>	TLCGAELVDALQFVCGDRGFYFNKPTGYGSSSRRAPQTGIVDECCFRSCDLR RLEMYCAPLKPAKSA
<b>Research Area</b>	Signal Transduction
<b>Source</b>	E.coli
<b>Target Names</b>	IGF1
<b>Expression Region</b>	52-118aa
<b>Notes</b>	Repeated freezing and thawing is not recommended. Store working aliquots at 4°C for up to one week.
<b>Tag Info</b>	Tag-Free
<b>Mol. Weight</b>	7.3 kDa
<b>Protein Length</b>	Partial

## Image



(Tris-Glycine gel) Discontinuous SDS-PAGE (reduced) with 5% enrichment gel and 15% separation gel.

<b>Endotoxin</b>	Less than 0.5 EU/ $\mu$ g as determined by LAL method.
------------------	--



## Reconstitution

We recommend that this vial be briefly centrifuged prior to opening to bring the contents to the bottom. Please reconstitute protein in deionized sterile water to a concentration of 0.1-1.0 mg/mL. We recommend to add 5-50% of glycerol (final concentration) and aliquot for long-term storage at -20°C/-80°C. Our default final concentration of glycerol is 50%. Customers could use it as reference.

## Shelf Life

The shelf life is related to many factors, storage state, buffer ingredients, storage temperature and the stability of the protein itself. Generally, the shelf life of liquid form is 6 months at -20°C/-80°C. The shelf life of lyophilized form is 12 months at -20°C/-80°C.