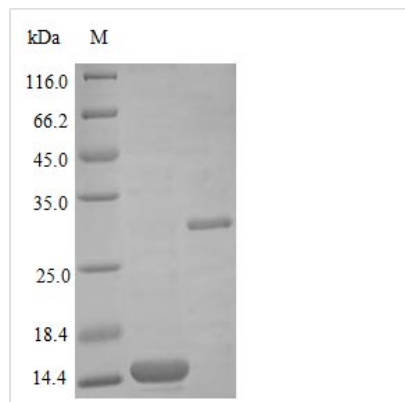




# Recombinant Human Bone morphogenetic protein 2 protein (BMP2)

|                            |   |
|----------------------------|---|
| <b>Product Code</b>        | CSB-AP002981HU  |
| <b>Abbreviation</b>        | Recombinant Human BMP2 protein (Active)   |
| <b>Uniprot No.</b>         | P12643  |
| <b>Storage Buffer</b>      | Lyophilized from a 0.2 µm filtered concentrated solution containing 10 mM sodium citrate pH 3.5.  |
| <b>Product Type</b>        | Growth Factors  |
| <b>Immunogen Species</b>   | Homo sapiens (Human)  |
| <b>Biological Activity</b> | Fully biologically active when compared to standard. The ED50 as determined by inducing alkaline phosphatase production of murine ATDC5 cells is less than 200 ng/ml, corresponding to a specific activity of $>5.0 \times 10^3$ IU/mg. |
| <b>Purity</b>              | $>95\%$ as determined by SDS-PAGE.  |
| <b>Sequence</b>            | M+QAKHKQRKR LKSSCKRHPL YVDFSDVGWN DWIVAPPGYH<br>AFYCHGEC PF PLADHLNSTN HAIVQTLVNS VNSKIPKACC VPTELSAISM<br>LYLDENEKVV LKNYQDMVVE GCGCR  |
| <b>Research Area</b>       | Cancer  |
| <b>Source</b>              | E.Coli  |
| <b>Target Names</b>        | BMP2  |
| <b>Expression Region</b>   | 283-396aa   |
| <b>Tag Info</b>            | Tag-Free  |
| <b>Mol. Weight</b>         | 13 kDa  |
| <b>Protein Length</b>      | Full Length of Mature Protein   |
| <b>PubMed ID</b>           | 3201241; 11780052; 9265423; 15020244; 20555025; 10074410  |

## Image



## Endotoxin

Less than 1.0 EU/µg as determined by LAL method.



## **Shelf Life**

The shelf life is related to many factors, storage state, buffer ingredients, storage temperature and the stability of the protein itself.

Generally, the shelf life of liquid form is 6 months at -20°C/-80°C. The shelf life of lyophilized form is 12 months at -20°C/-80°C.