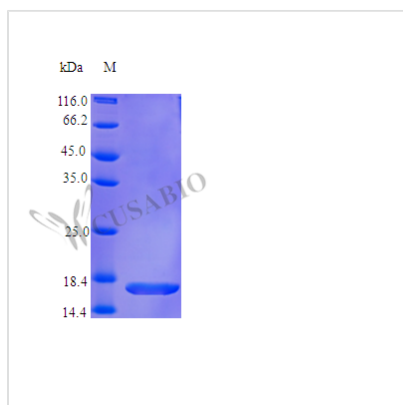




Recombinant Human Interleukin-36 receptor antagonist protein (IL36RN) (Active)

Product Code	CSB-AP002051HU
Abbreviation	Recombinant Human IL36RN protein (Active)
Uniprot No.	Q9UBH0
Form	Lyophilized powder
Storage Buffer	Lyophilized from a 0.2 µm filtered PBS, pH 7.4
Product Type	Interleukin
Immunogen Species	Homo sapiens (Human)
Biological Activity	Fully biologically active when compared to standard. The ED50 as determined by inhibiting IL-36 beta induced IL-8 secretion by human preadipocytes is less than 1.0 µg/ml, corresponding to a specific activity of >1000 IU/mg in the presence of 20 ng/ml of recombinant human IL-36 beta.
Purity	>95% as determined by SDS-PAGE.
Sequence	VLSGALCFRM KDSALKVLYL HNNQLLAGGL HAGKVIKGEE ISVVPNRWLD ASLSPVILGV QGGSQCLSCG VGQEPTLTLE PVNIMELYLG AKESKSFTFY RRDMGLTSSF ESAAYPGWFL CTVPEADQPV RLTQLPENGW WNAPITDFYF QQCD
Research Area	Immunology
Source	E.coli
Target Names	IL36RN
Expression Region	2-155aa
Notes	Repeated freezing and thawing is not recommended. Store working aliquots at 4°C for up to one week.
Tag Info	Tag-Free
Mol. Weight	16.8 kDa
Protein Length	Full Length of Mature Protein
PubMed ID	10625660; 10512743; 11093146; 11466363; 10860666; 11991722; 12975309; 14702039; 15815621; 15489334; 21965679; 23147407; 21839423; 21848462; 22903787
Image	



Endotoxin	Less than 1.0 EU/μg as determined by LAL method.
Reconstitution	We recommend that this vial be briefly centrifuged prior to opening to bring the contents to the bottom. Please reconstitute protein in deionized sterile water to a concentration of 0.1-1.0 mg/mL. We recommend to add 5-50% of glycerol (final concentration) and aliquot for long-term storage at -20°C/-80°C. Our default final concentration of glycerol is 50%. Customers could use it as reference.
Shelf Life	The shelf life is related to many factors, storage state, buffer ingredients, storage temperature and the stability of the protein itself. Generally, the shelf life of liquid form is 6 months at -20°C/-80°C. The shelf life of lyophilized form is 12 months at -20°C/-80°C.