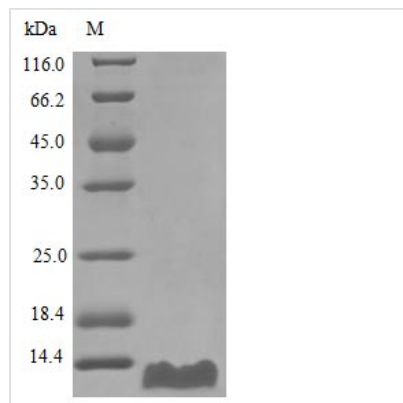




# Recombinant Human C-C motif chemokine 20 protein (CCL20) (Active)

<b>Product Code</b>	CSB-AP000931HU
<b>Abbreviation</b>	Recombinant Human CCL20 protein (Active)
<b>Uniprot No.</b>	P78556
<b>Form</b>	Lyophilized powder
<b>Storage Buffer</b>	Lyophilized from a 0.2 µm filtered concentrated solution in 20 mM PB, pH 7.4, 100 mM NaCl.
<b>Product Type</b>	Chemokine
<b>Immunogen Species</b>	Homo sapiens (Human)
<b>Biological Activity</b>	Fully biologically active when compared to standard. The biological activity determined by a chemotaxis bioassay using human T-lymphocytes is in a concentration range of 10-50 ng/ml.
<b>Purity</b>	>97% as determined by SDS-PAGE.
<b>Sequence</b>	ASNFDCCCLGY TDRILHPKFI VGFTTRQLANE GCDINAIIFH TKKKLSVCAN PKQTWVKYIV RLLSKKVKNM
<b>Research Area</b>	Immunology
<b>Source</b>	E.Coli
<b>Target Names</b>	CCL20
<b>Expression Region</b>	27-96aa
<b>Notes</b>	Repeated freezing and thawing is not recommended. Store working aliquots at 4°C for up to one week.
<b>Tag Info</b>	Tag-Free
<b>Mol. Weight</b>	8.0 kDa
<b>Protein Length</b>	Full Length of Mature Protein
<b>PubMed ID</b>	9013939; 9038201; 9129037; 11352563; 15815621; 15489334; 11035086; 12149255

**Image**



## Description

The recombinant human CCL20 protein is expressed in *E. coli* and covers the full length of the mature 27-96aa sequence. This tag-free protein is provided as a lyophilized powder, allowing for easy reconstitution with sterile water or buffer. With a purity of >97% as determined by SDS-PAGE and HPLC, our recombinant CCL20 also maintains a low endotoxin level of less than 1.0 EU/μg, as measured by the LAL method. The protein retains full biological activity, as demonstrated by its effectiveness in a chemotaxis bioassay using human T-lymphocytes, with an activity concentration range of 10-50 ng/ml.

C-C motif chemokine 20 (CCL20) is a member of the CC chemokine family and plays a crucial role in immune cell trafficking and function. As such, understanding the functions and mechanisms of CCL20 is vital in uncovering the roles it plays in the immune system and the development of potential therapeutic interventions for immune-related diseases.

## Endotoxin

Less than 1.0 EU/μg as determined by LAL method.

## Reconstitution

We recommend that this vial be briefly centrifuged prior to opening to bring the contents to the bottom. Please reconstitute protein in deionized sterile water to a concentration of 0.1-1.0 mg/mL. We recommend to add 5-50% of glycerol (final concentration) and aliquot for long-term storage at -20°C/-80°C. Our default final concentration of glycerol is 50%. Customers could use it as reference.

## Shelf Life

The shelf life is related to many factors, storage state, buffer ingredients, storage temperature and the stability of the protein itself. Generally, the shelf life of liquid form is 6 months at -20°C/-80°C. The shelf life of lyophilized form is 12 months at -20°C/-80°C.