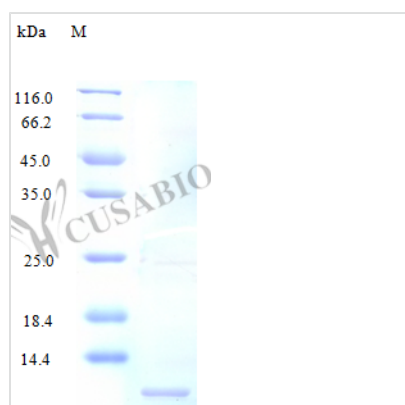




Recombinant Human C-C motif chemokine 3-like 1 protein (CCL3L1) (Active)

Product Code	CSB-AP000831HU
Abbreviation	Recombinant Human CCL3L1 protein (Active)
Uniprot No.	P16619
Form	Lyophilized powder
Storage Buffer	Lyophilized from a 0.2 µm filtered PBS, pH 7.4
Product Type	Chemokine
Immunogen Species	Homo sapiens (Human)
Biological Activity	Fully biologically active when compared to standard. The biological activity determined by a chemotaxis bioassay using human monocytes is in a concentration range of 1.0-10 ng/ml.
Purity	>97% as determined by SDS-PAGE.
Sequence	APLAADTPTA CCFSYTSRQI PQNFIADYFE TSSQCSKPSV IFLTKRGRQV CADPSEEWVQ KYVSDLELSA
Research Area	Immunology
Source	E.coli
Target Names	CCL3L1
Expression Region	24-93aa
Notes	Repeated freezing and thawing is not recommended. Store working aliquots at 4°C for up to one week.
Tag Info	Tag-Free
Mol. Weight	7.8 kDa
Protein Length	Full Length of Mature Protein
PubMed ID	1972563; 2271120; 1694014; 15489334; 15340161; 10961862; 11449371; 17330138

Image





Description

The Recombinant Human CCL3L1 protein is an essential research tool for investigators focusing on immunology. This C-C motif chemokine 3-like 1 protein, also known by its aliases CCL3L1, CCL3L3, D17S1718, G0S19-2, and SCYA3L1, is expressed in E. coli and covers the 24-93aa region, encompassing the full length of the mature protein. This tag-free, lyophilized powder can be readily reconstituted with sterile water or an appropriate buffer to accommodate various experimental needs.

Our Recombinant Human CCL3L1 protein exhibits a high purity of >97%, as established by both SDS-PAGE and HPLC analyses. The endotoxin levels are stringently controlled, ensuring they remain below 1.0 EU/μg, as verified by the LAL method. The protein is fully biologically active when compared to standard, with its biological activity determined by a chemotaxis bioassay using human monocytes within a concentration range of 1.0-10 ng/ml.

Endotoxin

Less than 1.0 EU/μg as determined by LAL method.

Reconstitution

We recommend that this vial be briefly centrifuged prior to opening to bring the contents to the bottom. Please reconstitute protein in deionized sterile water to a concentration of 0.1-1.0 mg/mL. We recommend to add 5-50% of glycerol (final concentration) and aliquot for long-term storage at -20°C/-80°C. Our default final concentration of glycerol is 50%. Customers could use it as reference.

Shelf Life

The shelf life is related to many factors, storage state, buffer ingredients, storage temperature and the stability of the protein itself. Generally, the shelf life of liquid form is 6 months at -20°C/-80°C. The shelf life of lyophilized form is 12 months at -20°C/-80°C.