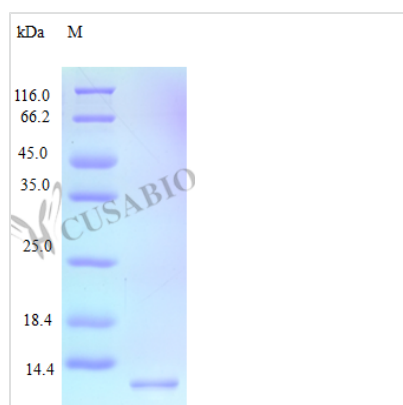




Recombinant Human C-C motif chemokine 15 protein (CCL15) (Active)

Product Code	CSB-AP000591HU
Abbreviation	Recombinant Human CCL15 protein (Active)
Uniprot No.	Q16663
Form	Lyophilized powder
Storage Buffer	Lyophilized from a 0.2 µm filtered PBS, pH 7.4
Product Type	Chemokine
Immunogen Species	Homo sapiens (Human)
Biological Activity	Fully biologically active when compared to standard. The biological activity determined by a chemotaxis bioassay using human T-lymphocytes is in a concentration range of 1.0-10 ng/ml.
Purity	>97% as determined by SDS-PAGE.
Sequence	QFINDAETEL MMSKLPLENP VVLNSFHFAA DCCTSYISQS IPCSLMKSYF ETSSECSKPG VIFLTKKGRQ VCAKPSGPGV QDCMKKLKPY SI
Research Area	Immunology
Source	E.coli
Target Names	CCL15
Expression Region	22-113aa
Notes	Repeated freezing and thawing is not recommended. Store working aliquots at 4°C for up to one week.
Tag Info	Tag-Free
Mol. Weight	10.2 kDa
Protein Length	Full Length of Mature Protein
PubMed ID	9548457; 9624581; 9600961; 10213461; 15489334; 15340161; 9129202; 9558365; 15905581; 10320325

Image





Description

The recombinant human CCL15 protein is expressed in E. coli and covers the full length of the mature 22-113aa sequence. This tag-free protein is provided as a lyophilized powder, allowing for easy reconstitution with sterile water or buffer. With a purity of >97% as determined by SDS-PAGE and HPLC, our recombinant CCL15 also maintains a low endotoxin level of less than 1.0 EU/μg, as measured by the LAL method. The protein retains full biological activity, as demonstrated by its effectiveness in a chemotaxis bioassay using human T-lymphocytes, with an activity concentration range of 1.0-10 ng/ml.

C-C motif chemokine 15 (CCL15) is a member of the CC chemokine family and plays a crucial role in regulating immune cell trafficking and function. As such, understanding the functions and mechanisms of CCL15 is vital in uncovering the roles it plays in the immune system and the development of potential therapeutic interventions for immune-related diseases.

Endotoxin

Less than 1.0 EU/μg as determined by LAL method.

Reconstitution

We recommend that this vial be briefly centrifuged prior to opening to bring the contents to the bottom. Please reconstitute protein in deionized sterile water to a concentration of 0.1-1.0 mg/mL. We recommend to add 5-50% of glycerol (final concentration) and aliquot for long-term storage at -20°C/-80°C. Our default final concentration of glycerol is 50%. Customers could use it as reference.

Shelf Life

The shelf life is related to many factors, storage state, buffer ingredients, storage temperature and the stability of the protein itself. Generally, the shelf life of liquid form is 6 months at -20°C/-80°C. The shelf life of lyophilized form is 12 months at -20°C/-80°C.