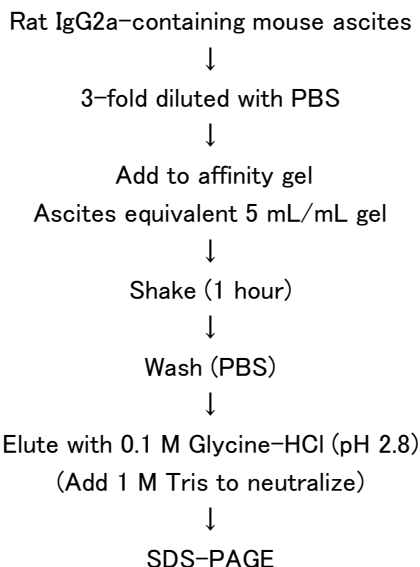
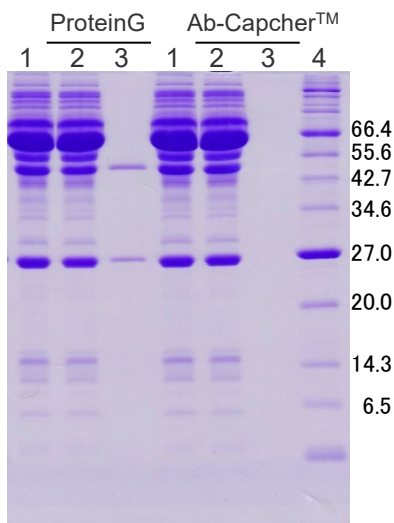


Ab-Capcher™ Cannot purify rat monoclonal IgG2a

Purification flow chart



Electrophoresis result



SDS-PAGE

Sample: Rat IgG2a elution fraction
Gel: 15% (Tris-Glycine)
Stain: CBB

- 1 : × 3 mouse ascites
- 2 : Flow through
- 3 : Eluate
- 4 : MW marker

Mouse ascites fluid containing rat IgG2a was diluted 3-fold with PBS, added to the gel carrier, and shaken for 1 hour. After shaking, the gel was washed and eluted at pH 2.8. When the eluted fraction was confirmed by SDS-PAGE, it was found that rat IgG2a was not bound to Ab-Capcher™. The protein G sepharose used as a comparison was able to purify rat IgG2a, although the binding capacity was not high with the 0.58 mg/mL gel.