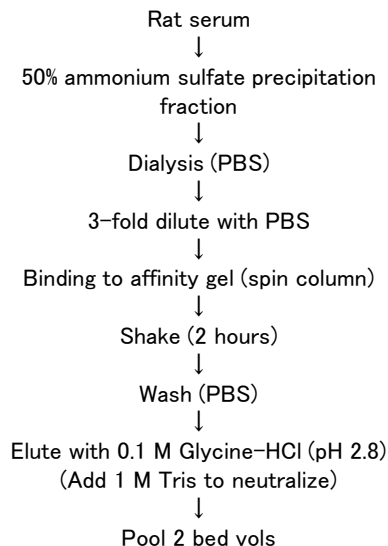
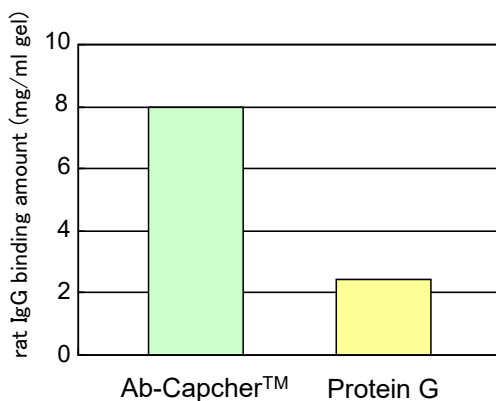


Ab-Capcher™ Purification of rat serum IgG

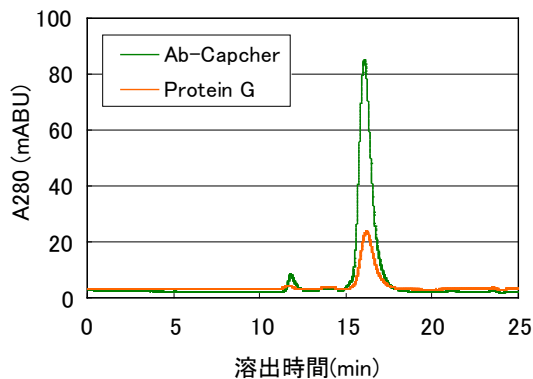
Purification flow chart



Rat serum IgG binding amount of various affinity gels



Analysis of IgG fractions purified by various affinity gels



Gel filtration HPLC

Sample: IgG1 elution fraction 10 μ l
Analytical column: G3000SWXL
buffer: 35mM Na-Pi, 0.5M NaCl, pH7.0
Flow rate: 0.5ml/min



SDS-PAGE

Sample: IgG1 elution fraction 1 μ l
Gel: 12.5 % (Tris-Glycine)
Stain: CBB

Rat serum was precipitated with 50% ammonium sulfate, dialyzed to PBS and added to Ab-Capcher™ and a commercially available protein G gel. Binding of rat serum IgG to Ab-Capcher™ was 4-fold elevated compared to a commercially available protein G gel. IgG purity was 93.0% for protein G gel and 95.0% for Ab-Capcher™. Thus, Ab-Capcher™ was able to purify 4-fold higher amount of highly purified rat serum IgG than commercially available protein G gel.