



# ProteinExpress

ProteinExpress Co., Ltd.  
Chiba University Inohana Innovation Plaza  
1-8-15, Inohana, Chuo-ku,  
Chiba-shi, Chiba 260-0856, Japan  
Tel: +81-43-202-5755, Fax: +81-43-202-5756  
E-mail: [antibody@proteinexpress.co.jp](mailto:antibody@proteinexpress.co.jp)  
Web: [www.proteinexpress.co.jp](http://www.proteinexpress.co.jp)

## Anti-Mouse BTBD7 (KIAA1525) Polyclonal Antibody, Rabbit

**Code # :** MKA1525AF [FAF01173], (Lot# xxx)

**Gene :** mouse BTB (POZ) domain containing 7 (mBTBD7, mKIAA1525)

**Immunogen :** GX0245 (GST-fusion protein, 132 amino acids)  
MTSDVIFYELSKDHLLTAIQSDYLAQASEQDILKYLIKWGEHQMLMKRIADREPNNLSGTAHSVKNRG  
VKRRDLIDIEELREILSSLLPFVRIEHILPINSEVLSDAVSSFLLLFLSRKEKCQTYPALIILNDFS

**Format :** Affinity Purified Rabbit IgG

**Constitution :** PBS containing with 50% glycerol and 0.02% of NaN<sub>3</sub>

**Quantity :** 50 µg (250 µL)

**Specificity :** Specific to recombinant protein GX0245. This antibody detects mBTBD7 protein. It also recognizes human BTBD7 protein. Other species have not been tested.

**Application :** Western blotting (1 : 1,000), Other applications have not been tested.

**Storage :** Store at -20°C. Avoid freeze-thaw cycles.

**References :** 1) Okazaki, N. et al.: DNA Res., 10(1), 35 (2003).

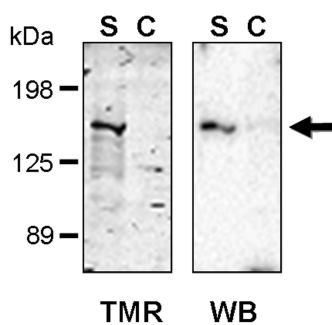
For research use only, not for diagnostic use



**Kazusa DNA Research Institute**

2-6-7, Kazusa-kamatari,  
Kisarazu, Chiba 292-0818 JAPAN  
<http://www.kazusa.or.jp>

**Anti-Mouse BTBD7 (KIAA1525)**



**TMR-Label(Left) & Western blot(Right)**

**S: Total lysate of HaloTag-fused KIAA1525  
expressed HEK293 cells (4  $\mu$ g)**

**C: Control HEK293 cell lysate (4  $\mu$ g)**

**\*HaloTag (MW: Approx. 33 kDa)**

