



ProteinExpress

ProteinExpress Co., Ltd.
Chiba University Inohana Innovation Plaza
1-8-15, Inohana, Chuo-ku,
Chiba-shi, Chiba 260-0856, Japan
Tel: +81-43-202-5755, Fax: +81-43-202-5756
E-mail: antibody@proteinexpress.co.jp
Web: www.proteinexpress.co.jp

Anti-Mouse SATB2 (KIAA1034) Polyclonal Antibody, Rabbit

Code # : MKA1034AF [FAF00718], (Lot# xxx)

Gene : mouse SATB homeobox 2 (mSATB2, mKIAA1034)

Immunogen : GX1622 (GST-fusion protein, 288 amino acids)
PEVERDRIYQDERERSMNPVSMVSSASSPSSSRTPQAKTSTPTDLPKVDGANVNITAAIY
DEIQQEMKRAKVSQALFAKVAANKSQGWLCELLRWKENPSPENRTLWENLCTIRRFLNLPQHE
RDVIYEEESRHHHSERMQHVVQLPPEPVQVLHRQQSQPTKESSPPREEAPPPPPPTEDSCAK
KPRSRTKISLEALGILQSFHVDVGLYPDQEAIHTLSAQLDLPKHTIIKFFQNRQRYHVKHGKLEHL
GSAVDVAEYKDEELLTESEENDSEEGSEEMYK

Format : Affinity Purified Rabbit IgG

Constitution : PBS containing with 50% glycerol and 0.02% of NaN₃

Quantity : 50 µg (250 µL)

Specificity : Specific to recombinant protein GX1622. This antibody detects mSATB2 protein. It also recognizes human SATB2 protein. Other species have not been tested.

Application : Western blotting (1 : 1,000), Other applications have not been tested.

Storage : Store at -20°C. Avoid freeze-thaw cycles.

References : 1) Okazaki, N. et al.: DNA Res., 10(1), 35 (2003).

For research use only, not for diagnostic use



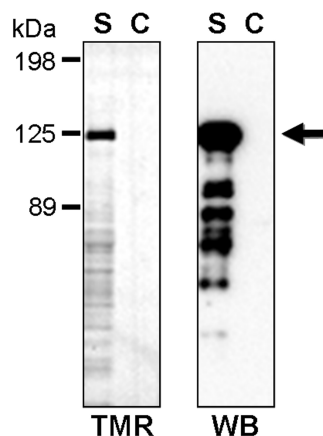
Kazusa DNA Research Institute
2-6-7, Kazusa-kamatari,
Kisarazu, Chiba 292-0818 JAPAN
<http://www.kazusa.or.jp>



ProteinExpress

ProteinExpress Co., Ltd.
Chiba University Inohana Innovation Plaza
1-8-15, Inohana, Chuo-ku,
Chiba-shi, Chiba 260-0856, Japan
Tel: +81-43-202-5755, Fax: +81-43-202-5756
E-mail: antibody@proteinexpress.co.jp
Web: www.proteinexpress.co.jp

Anti-Mouse SATB2 (MKA1034AF)



TMR-Label(Left) & Western blot(Right)

S: Total lysate of HaloTag-fused KIAA1034
expressed HEK293 cells (4 μ g)

C: Control HEK293 cell lysate (4 μ g)



Kazusa DNA Research Institute
2-6-7, Kazusa-kamatari,
Kisarazu, Chiba 292-0818 JAPAN
<http://www.kazusa.or.jp>