



ProteinExpress

ProteinExpress Co., Ltd.
Chiba University Inohana Innovation Plaza
1-8-15, Inohana, Chuo-ku,
Chiba-shi, Chiba 260-0856, Japan
Tel: +81-43-202-5755, Fax: +81-43-202-5756
E-mail: antibody@proteinexpress.co.jp
Web: www.proteinexpress.co.jp

Anti-Mouse KCND2 (KIAA1044) Polyclonal Antibody, Rabbit (Cerebellum, Granule cell)

Code # : MK10440310 (Lot# XXX)

Gene : mouse potassium voltage-gated channel, Shal-related family, member 2 (KCND2) (mKCND2, mKIAA1044)

Immunogen : GXD01 (GST-fusion protein, 187 amino acids)
YMQSKRNGLLSNQLQSSSEDEPAFISKSGSSFETQHHLLHCLEKTTNHEFVDEQVFEEESCMEV
ATVNRPSSHRPSLSSQQGVTSTCCSRRHKKTFRIPNANVSGSHRGSVQELSTIQIRCVERTPLS
NSRSSLNAKMEECVKLNCEQPYVTTAISIPVTPVTTPEGDDRPESPEYSGGNIVRVSA

Format : Rabbit IgG purified with Protein A affinity chromatography.

Constitution : PBS containing with 50% glycerol and 0.02% of NaN₃

Quantity : 100 µg (200 µL)

Specificity : Specific to recombinant protein GXD01. This antibody detects endogenous mKCND2 protein in cerebellar granule cells. Other species have not been tested.

Application : Immunohistochemistry.
Other applications have not been tested.

Storage : Store at -20°C. Avoid freeze-thaw cycles.

References : 1) Hara, Y. *et al.*: *DNA Res.*, 10, 129 (2003).
2) Koga, H. *et al.*: *DNA Res.*, 11, 293 (2004).
3) Shibasaki, K. *et al.*: *J Neurochem.*, 89, 897 (2004).
4) Frank-Hansen, R. *et al.*: *Clin Chim Acta.*, 351, 95 (2005)

For research use only, not for diagnostic use



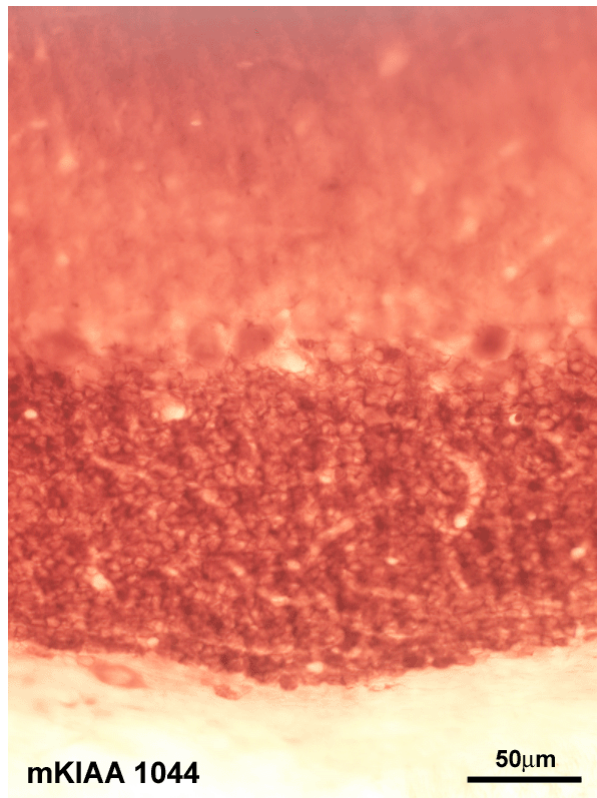
Kazusa DNA Research Institute
2-6-7, Kazusa-kamatari,
Kisarazu, Chiba 292-0818 JAPAN
<http://www.kazusa.or.jp>



ProteinExpress

ProteinExpress Co., Ltd.
Chiba University Inohana Innovation Plaza
1-8-15, Inohana, Chuo-ku,
Chiba-shi, Chiba 260-0856, Japan
Tel: +81-43-202-5755, Fax: +81-43-202-5756
E-mail: antibody@proteinexpress.co.jp
Web: www.proteinexpress.co.jp

Anti-Mouse KCND2 (KIAA1044)



Kazusa DNA Research Institute
2-6-7, Kazusa-kamatari,
Kisarazu, Chiba 292-0818 JAPAN
<http://www.kazusa.or.jp>