



ProteinExpress

ProteinExpress Co., Ltd.
Chiba University Inohana Innovation Plaza
1-8-15, Inohana, Chuo-ku,
Chiba-shi, Chiba 260-0856, Japan
Tel: +81-43-202-5755, Fax: +81-43-202-5756
E-mail: antibody@proteinexpress.co.jp
Web: www.proteinexpress.co.jp

Anti-Mouse TLN1 (KIAA1027) Polyclonal Antibody, Rabbit

Code # : MK10270310 (Lot# XXX)

Gene : mouse talin 1 (mTLN1, mKIAA1027)

Immunogen : GX0347 (GST-fusion protein, 156 amino acids)
PASPNLKSQAAAAARAVTDSINQLITMCTQQAPGQKECDNALRQLETVRELLENPVQPINDMSY
FGCLDSVMENSKVLGEAMTGISQNAKNGNLPEFGDAIATASKALCGFTEAAAQAAYLVGVSDP
NSQAGQQGLVEPTQFARANQAIQMACQSL

Format : Rabbit IgG purified with Protein A affinity chromatography.

Constitution : PBS containing with 50% glycerol and 0.02% of NaN₃

Quantity : 100 µg (200 µL)

Specificity : Specific to recombinant protein GX0347. This antibody detects endogenous mTLN1 protein in several tissues. It also recognizes human TLN1 protein. Other species have not been tested.

Application : Western blotting (1 : 1,000), Immunoprecipitation.
Other applications have not been tested.

Storage : Store at -20°C. Avoid freeze-thaw cycles.

References : 1) Hara, Y. *et al.*: *DNA Res.*, 10, 129 (2003).
2) Koga, H. *et al.*: *DNA Res.*, 11, 293 (2004).
3) de Pereda, J.M. *et al.*: *J Biol Chem.*, 280, 8381 (2005).

For research use only, not for diagnostic use



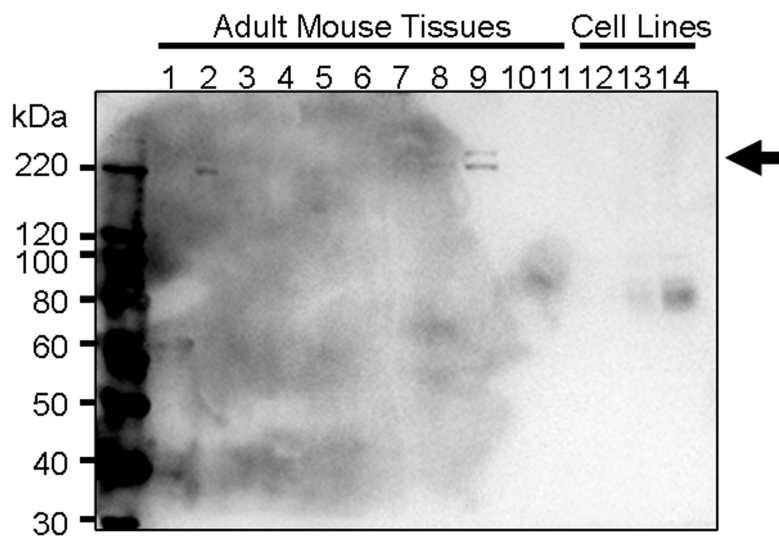
Kazusa DNA Research Institute
2-6-7, Kazusa-kamatari,
Kisarazu, Chiba 292-0818 JAPAN
<http://www.kazusa.or.jp>



ProteinExpress

ProteinExpress Co., Ltd.
Chiba University Inohana Innovation Plaza
1-8-15, Inohana, Chuo-ku,
Chiba-shi, Chiba 260-0856, Japan
Tel: +81-43-202-5755, Fax: +81-43-202-5756
E-mail: antibody@proteinexpress.co.jp
Web: www.proteinexpress.co.jp

Anti-Mouse TLN1 (KIAA1027)



Western blot analysis

Adult Mouse Tissues -

1:Heart, 2:Lung, 3:Liver, 4:Muscle, 5:Kidney,
6:Testis, 7:Pancreas, 8:Thymus, 9:Spleen,
10:Brain, 11:Prostate.

Cell Lines -

12:B16 cells, 13:F9 cells, 14:Neuro2A cells.



Kazusa DNA Research Institute

2-6-7, Kazusa-kamatari,
Kisarazu, Chiba 292-0818 JAPAN
<http://www.kazusa.or.jp>