



# ProteinExpress

ProteinExpress Co., Ltd.  
Chiba University Inohana Innovation Plaza  
1-8-15, Inohana, Chuo-ku,  
Chiba-shi, Chiba 260-0856, Japan  
Tel: +81-43-202-5755, Fax: +81-43-202-5756  
E-mail: [antibody@proteinexpress.co.jp](mailto:antibody@proteinexpress.co.jp)  
Web: [www.proteinexpress.co.jp](http://www.proteinexpress.co.jp)

## Anti-Mouse ERC2 (KIAA0378) Polyclonal Antibody, Rabbit (Cerebellum, Purkinje cell)

**Code # :** MK03780310 (Lot# XXX)

**Gene :** mouse ELKS/RAB6-interacting/CAST family member 2 (ERC2)  
(mERC2, mKIAA0378)

**Immunogen :** GX0090 (GST-fusion protein, 153 amino acids)  
LMNALEKTRQELDATKARLASTQQSLAEKEAHLANLRIERRKQLEEILEMKQEALLAISEKDANI  
ALLELSASKKKKTQEEVMALKREKDRLVHQLKQQTQNRMKLMADNYDEDHHHHYHHHHHHHHHH  
RSPGRSQHSNHRPSPDQDDEEGIWA

**Format :** Rabbit IgG purified with Protein A affinity chromatography.

**Constitution :** PBS containing with 50% glycerol and 0.02% of NaN<sub>3</sub>

**Quantity :** 100 µg (200 µL)

**Specificity :** Specific to recombinant protein GX0090. This antibody detects endogenous mERC2 protein in cerebellar purkinje cells. Other species have not been tested.

**Application :** Immunohistochemistry.  
Other applications have not been tested.

**Storage :** Store at -20°C. Avoid freeze-thaw cycles.

**References :** 1) Hara, Y. *et al.*: *DNA Res.*, 10, 129 (2003).  
2) Koga, H. *et al.*: *DNA Res.*, 11, 293 (2004).  
3) Ko, J. *et al.*: *J Biol Chem.*, 278, 42377 (2003).  
4) Takao-Rikitsu, E. *et al.*: *J Cell Biol.*, 164, 301 (2004).

**For research use only, not for diagnostic use**



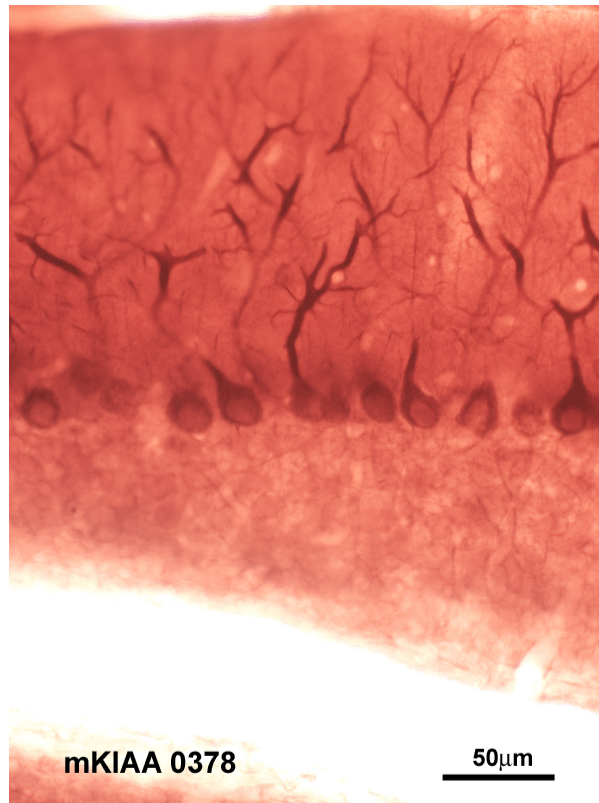
**Kazusa DNA Research Institute**  
2-6-7, Kazusa-kamatari,  
Kisarazu, Chiba 292-0818 JAPAN  
<http://www.kazusa.or.jp>



**ProteinExpress**

ProteinExpress Co., Ltd.  
Chiba University Inohana Innovation Plaza  
1-8-15, Inohana, Chuo-ku,  
Chiba-shi, Chiba 260-0856, Japan  
Tel: +81-43-202-5755, Fax: +81-43-202-5756  
E-mail: [antibody@proteinexpress.co.jp](mailto:antibody@proteinexpress.co.jp)  
Web: [www.proteinexpress.co.jp](http://www.proteinexpress.co.jp)

**Anti-Mouse ERC2 (KIAA0378)**



**Kazusa DNA Research Institute**  
2-6-7, Kazusa-kamatari,  
Kisarazu, Chiba 292-0818 JAPAN  
<http://www.kazusa.or.jp>