

# Anti human CAR mouse monoclonal antibody

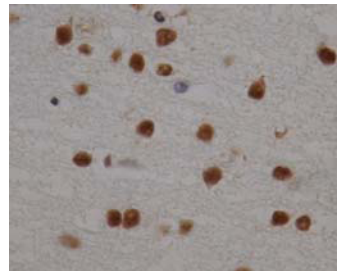
CAR: Constitutive androstane receptor

<b>Code No</b>	PP-N4111-00
<b>Clone No.</b>	N4111
<b>Lot.</b>	***
<b>Concentration</b>	1mg/mL
<b>Volume</b>	100µL
<b>Ig Class</b>	G1
<b>Description</b>	CAR (NR113) is a member of orphan receptor. CAR is mainly expressed in liver and lower levels of expression are observed in heart, muscles, kidney and lung. CYP3A and CYP2B are regulated by CAR, which suggest xenobiotics can activate multiple CYP genes through this receptor. Mouse homolog is induced by phenobarbital and CAR-null mouse resistance to acetaminophen toxicity. CAR affects metabolism of drugs and other xenobiotics.
<b>Nomenclature</b>	NR113
<b>Genbank</b>	Z30425
<b>Origin</b>	Produced in BALB/c mouse ascites after inoculation with hybridoma of mouse myeloma cells (NS-1) and spleen cells derived from a BALB/c mouse immunized with E.coli-expressed recombinant human CAR (76-348 aa).
<b>Specificity</b>	This antibody specifically recognizes human CAR and cross reacts with mouse and rat CAR. This antibody does not recognize human PXR.
<b>Purification</b>	Ammonium sulfate fractionation
<b>Formulation</b>	Physiological saline with 0.1% NaN <sub>3</sub> as a preservative.

## Application / Recommended Concentration

In order to obtain the best results, optimal working dilutions should be determined by each individual user.

<b>Western Blot</b>	1 ug/mL
<b>Non reducing Western Blot</b>	3ug/mL
<b>ELISA</b>	0.1 ug/mL (A450=0.2)
<b>Immunoprecipitation</b>	Decide by use
<b>Supershift Assay</b>	Not yet tested
<b>Chromatin immunoprecipitation</b>	Not yet tested
<b>Immunohistochemistry</b>	Decide by use



Rat / Cerebellum

**Storage** Store at 2 - 8 °C up to one month. For long-term storage, the solution may be frozen in working aliquots. Repeated freezing and thawing is not recommended. Storage in a frost-free freezer is not recommended.

## Reference

**Notes** Sodium azide may react with lead and copper plumbing to form explosive metal azides. Flush with large amounts of water during disposal.

FOR RESEARCH ONLY. NOT FOR USE IN HUMANS.

Not for Diagnostic or Therapeutic use. Purchase of this product does not include or carry any right to resell or transfer this product either as a stand-alone product or as a component of another product. Any use of this product other than the permitted use without the express written consent of Perseus Proteomics Inc. is prohibited.

**MADE IN JAPAN**

Apr 17, 2008



**COSMO BIO CO., LTD.**  
Inspiration for Life Science

Distributor:  
**Cosmo Bio Co.,Ltd.**  
2-20,Toyo, 2Chome,Tokyo 135-0016,Japan  
TEL: +81-3-5632-9617 FAX: +81-3-5632-9618  
<http://www.cosmobio.co.jp>



Manufactured by  
**Perseus Proteomics Inc.**  
4-7-6, Komaba, Meguro-ku,  
Tokyo 153-0041, Japan  
<http://www.ppmx.com>