

# Anti human NGFI-B beta mouse monoclonal antibody

NGFI-B beta: Nerve growth factor-induced clone B beta

**Code No** PP-N1404-00

**Clone No.** N1404

**Lot.** \*\*\*

**Concentration** 1 mg/mL

**Volume** 100 uL

**Ig Class** G2a

**Description** NGFI-B $\beta$ (NR4A2) is an orphan receptor. The expression is found in liver as well as in pituitary, thymus and osteoblasts. Transcription is enhanced in synovial tissue of RA patients compared with normal individuals. Induction of this receptor occurs downstream to multiple inflammatory mediators. Mice lacking this gene failed to generate brain dopaminergic neurons, which may relate for Parkinson Disease.

**Nomenclature** NR4A2

**Genbank** NM\_173173

**Origin** Produced in BALB/c mouse ascites after inoculation with hybridoma of mouse myeloma cells (NS-1) and spleen cells derived from a BALB/c mouse immunized with Baculovirus-expressed recombinant human NGFI-B beta(2-99 aa).

**Specificity** This antibody specifically recognizes human NGFI-B beta and cross reacts with mouse and rat NGFI-B beta. This antibody does not recognize human NGFI-B alpha and gamma.

**Purification** Ammonium sulfate fractionation

**Formulation** Physiological saline with 0.1% NaN<sub>3</sub> as a preservative.

## Application / Recommended Concentration

In order to obtain the best results, optimal working dilutions should be determined by each individual user.

**Western Blot** 1 ug/mL

**Non reducing Western Blot** 3 ug/mL

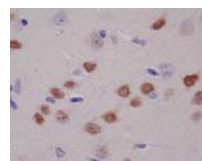
**ELISA** Decide by use

**Immunoprecipitation** Decide by use

**Supershift Assay** Not yet tested

**Chromatin immunoprecipitation** Not yet tested

**Immunohistochemistry** 10 ug/mL



rat  
Cerebrum  
paraffin section

**Storage** Store at 2 - 8 °C up to one month. For long-term storage, the solution may be frozen in working aliquots. Repeated freezing and thawing is not recommended. Storage in a frost-free freezer is not recommended.

## Reference

**Notes** Sodium azide may react with lead and copper plumbing to form explosive metal azides. Flush with large amounts of water during disposal.

FOR RESEARCH ONLY. NOT FOR USE IN HUMANS.

Not for Diagnostic or Therapeutic use. Purchase of this product does not include or carry any right to resell or transfer this product either as a stand-alone product or as a component of another product. Any use of this product other than the permitted use without the express written consent of Perseus Proteomics Inc. is prohibited.

**MADE IN JAPAN**

May 7, 2008



**COSMO BIO CO., LTD.**  
Inspiration for Life Science

**Distributor:**  
**Cosmo Bio Co., Ltd.**  
2-20, Toyo, 2Chome, Tokyo 135-0016, Japan  
TEL: +81-3-5632-9617 FAX: +81-3-5632-9618  
<http://www.cosmobio.co.jp>



**Manufactured by**  
**Perseus Proteomics Inc.**  
4-7-6, Komaba, Meguro-ku,  
Tokyo 153-0041, Japan  
<http://www.ppmx.com>