

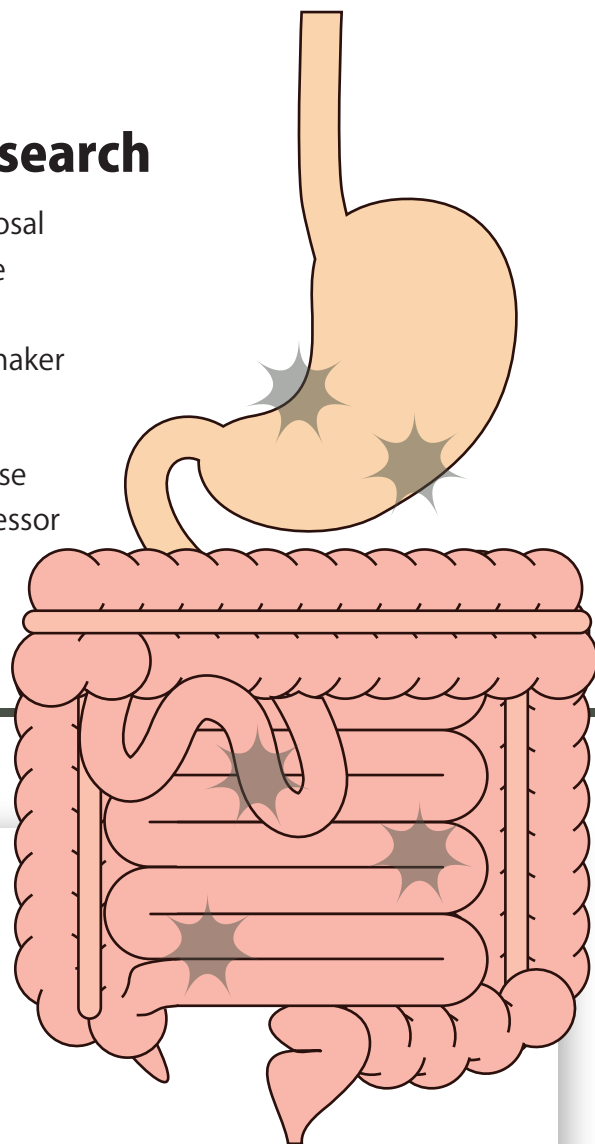
# Tumor Cell Line

# GIST-T1 Culture Kit

## A new and unique cell line for Cancer and Gastrointestinal Research

Gastrointestinal stromal tumors (GISTs) are one of the submucosal tumors which occur in the stomach, the small intestine and the esophagus, unlike most gastrointestinal tumors. GISTs are considered to arise from the interstitial cells of Cajal and pacemaker cells of the gut.

GIST-T1 is a cell line derived from the stomach wall of a Japanese woman. It was established by Takahiro Taguchi; associate professor at the Graduate School of Integrated Arts and Sciences, Kochi-University, Kochi, Japan.



### General Information

**Organism:** Homo sapiens, human

**Tissue:** Stomach wall

**Cultural:** Properties Adherent

**Biosafety:** Level 1

**Gender:** Female

**Ethnicity:** Asian

**Virus Check:** HIV-1 (-), HTLV-1 (-), HBV (-), TCV (-), *T. pallidum* (-)

**Quality Check:** Mycoplasma (-)

### Product Information

Description	Cat. No.	Quantity	Storage
GIST-T1 Culture Kit	PMC-GIST01-COS	1 kit	-20°C & Liquid Nitrogen
<ul style="list-style-type: none"><li>• GIST-T1, cryopreserved</li><li>• Culture Medium</li></ul>	1.0x10 <sup>6</sup> cells/vial (Liquid Nitrogen) 250 mL (-20°C)	*Culture Medium components: DMEM, FBS, antibiotic, etc.	
GIST-T1 Culture Medium	PMC-GISTM-COS	500 mL	-20°C

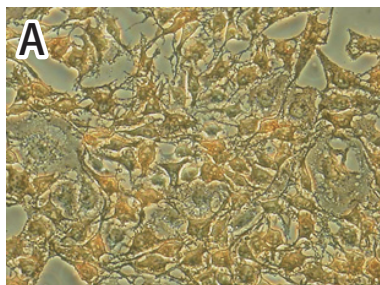


COSMO BIO CO., LTD.

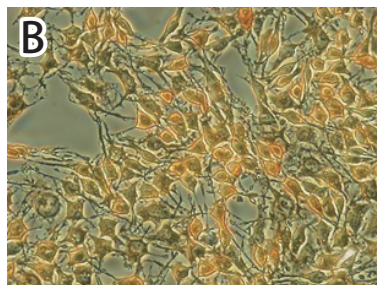
# Tumor Cell Line

# GIST-T1 Culture Kit

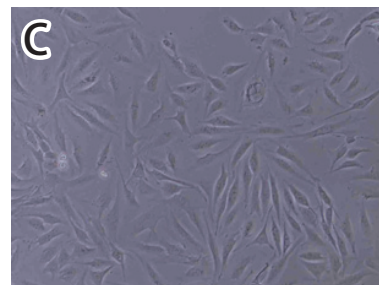
## Immunohistochemical and phase-contrast microscopic observation



Anti-CD34



Anti-c-kit



phase-contrast microscopic observation

## Precautions

- \* Cells are derived from human tissue. Please wear gloves and safety glasses when working with them.
- \* Remove the cryovial from dry ice packaging and immediately place into liquid nitrogen storage until use.
- \* Based on the license agreement of Techno network Shikoku and Kochi University, GIST-T1 cells are prohibited to be provided (distribution, lending, transfer, licensing, etc.) to a third party.

## Notification

- \* Please use the recommended media (Cat.no# PMC-GISTM-COS) for culturing of GIST-T1 cells.
- \* Using media other than what's recommended will NOT be under the warranty.
- \* Since culture medium contains 10% of FBS, please confirm whether animal certificates are required for importing this product into your country.

## References

Takahiro Taguchi, Hiroshi Sonobe, and Kazunari Yuri. *et al.* Conventional and Molecular Cytogenetic Characterization of a New Human Cell Line, GIST-T1, Established from Gastrointestinal Stromal Tumor. *Lab Invest.* 2002 May; **82**(5): 663-5.

10126



**COSMO BIO CO., LTD.**

TOYO EKIMAE BLDG. 2-20, TOYO 2-CHOME,  
KOTO-KU. TOKYO 135-0016, JAPAN  
TEL : (81)3-5632-9617  
FAX : (81)3-5632-9618  
e-mail : export@cosmobio.co.jp  
URL : www.cosmobio.com



www.cosmobio.com