

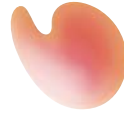


INSTRUCTIONS FOR USE

THANK YOU FOR YOUR PURCHASE OF THE
APT L.

Please read these instructions carefully
before use of the APT L for proper use.
Keep this instruction manual on hand to
refer to if necessary.

phoenix·dent CO., LTD.



COSMO BIO CO., LTD.

TOYO EKIMAE BLDG. 2-20, TOYO 2-CHOME,
KOTO-KU, TOKYO 135-0016, JAPAN
TEL : (81)3-5632-9617
FAX : (81)3-5632-9618
e-mail : export@cosmobio.co.jp
URL : www.cosmobio.com



www.cosmobio.com

BATTERY INSTALLATION

Slide the cover with "OPEN" on the bottom of the APT L in the direction of the arrow, and install a battery.

Note: Replace the battery if spark becomes weak. Use the SUM-3, 1.5V battery, and be sure to install it properly, taking care to align the positive and negative terminals.

LPG CONTAINER INSTALLATION

- 1 Slide the safety lock switch to the "S' LOCK" position (Green color can be seen.)
- 2 Install the LPG container and rotate it until its slit is up and aligned with the red mark ▲ on the panel of the APT L. Then push the container until it clicks attracted to the magnet on the APT L.

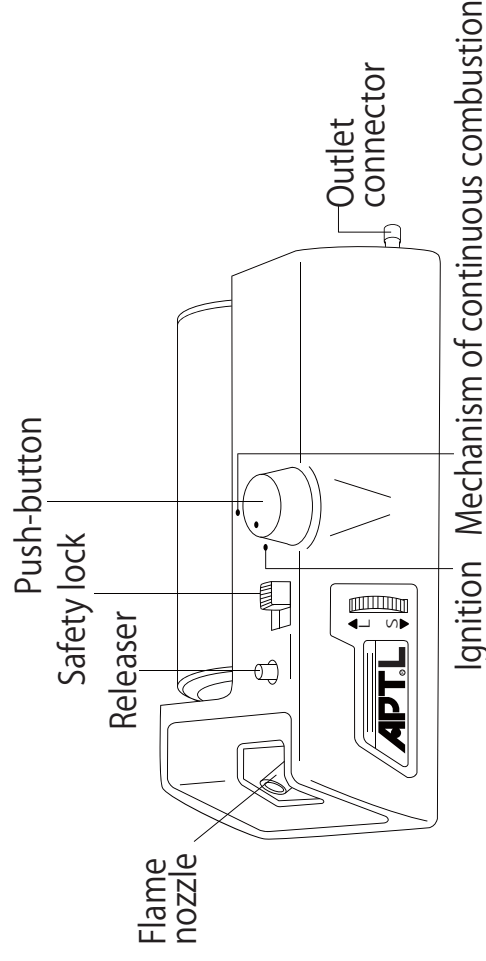
OPERATION

- 1 Slide the safety lock switch to the "RELEASE" position (Red color can be seen.)
- 2 Push the button for ignition. Release the button to extinguish the flame.
- 3 While pushing the button, turn it clockwise for continuous combustion. This will keep the flame burning even if you release the button.

AFTER USE

- 1 Remove the LPG container from the APT L and rotate it until its slit of LPG container is not aligned with the red mark ▲ on the APT L.
- 2 Push the center of the "outlet connector" of the APT L with the releaser, and keep pushing it until "hissing" sound stops in order to release the LP gas remaining in the APT L.
- 3 Slide the safety lock switch to the "S' LOCK" position (Green color can be seen.)

DESIGNATION OF PARTS



CAUTIONS

- 1 If you have gas smell, stop the use of the APT L and remove the container. Make sure of the following points for safety use:
 - (1) the nozzle is not clogged.
 - (2) the LPG container is properly installed.
 - (3) the battery does not become weak.
 - (4) sparking is normal.Following the operation instructions, use the APT L again after these problems are solved.
- 2 Do not use the APT L in an inclining position.
- 3 After use, strictly follow the instructions of "AFTER USE".
- 4 When transporting the APT L, remove the container from the AOT L, rotate it and then remove the battery from the APT L.

Note: The vaporized gas normally goes to the APT L from the LPG container, but when moving the APT L, the liquefied gas in the container may go into the APT L and cause troubles. So, the LPG container should be removed when transporting the APT L.