

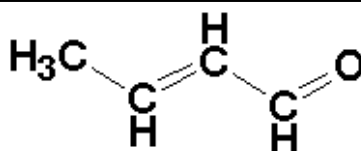


An antibody for oxidative stress evaluation

Anti-CRA Antibody Code# NOF-N213630-EX

Anti-crotonaldehyde monoclonal antibody

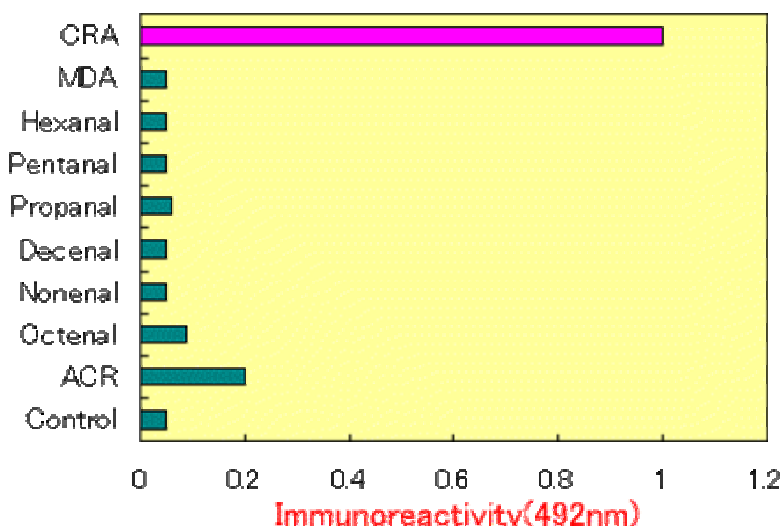
Crotonaldehyde (CRA) is a representative carcinogenic aldehyde formed endogenously through lipid peroxidation. CRA is highly reactive aldehyde and reacts with lysine residue in protein. The reaction with CRA and lysine residue leads to the formation of numerous numbers of adducts. This antibody is specific for the CRA-modified protein.



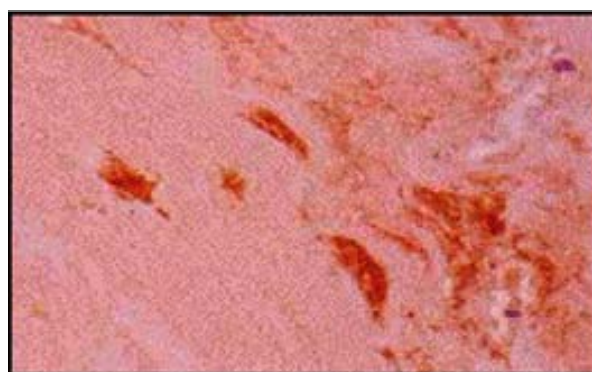
Crotonaldehyde

Antigen	: CRA-modified keyhole-lympet hemocyanine
Source	: Mouse
Purify	: Protein A
Form	: Frozen. (10mM PBS containing 0.1 %NaN3 and 0.5% BSA)
Specificity	: Specific for CRA-modified protein (especially CRA-lysine adduct)
Class	: IgG
Use	: Immunohistochemistry
Storage	: Less than -20° C
Package	: 30ug/vial (100ug/mL)

Cross-reactivity of Anti-CRA antibody



▼ Immunohistochemical detection of CRA-lysine adduct in atherosclerotic aorta.



Noriyuki Shibata et al.
Tokyo Women's medical University

 **NOF CORPORATION**

Distributor



COSMO BIO CO., LTD.
Inspiration for Life Science

TOYO 2CHOME, KOTO-KU, TOKYO, 135-0016, JAPAN

<http://www.cosmobio.co.jp>

Phone : +81-3-5632-9617

e-mail : export@cosmobio.co.jp

FAX : +81-3-5632-9618