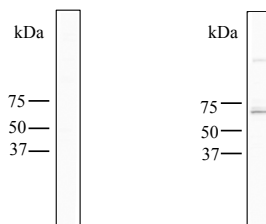


| KZ625 mouse IgM isotype control antibody (Clone No.MK02) |  | Keyword        |              |
|--|--|----------------|--------------|
| Type   | Monoclonal Antibody  |                |              |
| Immunogen  | KLH  |                |              |
| Raised in  | Mouse  |                |              |
| Myeloma  | P3U1   |                |              |
| Clone number   | MK02   |                |              |
| Isotype  | IgM, kappa   |                |              |
| Source   | Serum-free medium  |                |              |
| Purification notes                                       | ProteinL   | Application    |              |
| Cross Reactivity   |  | WB             | 0.1-10 µg/mL |
| Label  | Unlabeled  | IHC            | 0.1-10 µg/mL |
| Formulation  | Lyophilized powder   | ICC            | Not tested   |
| Contents   | 100 µg   | ELISA          | Not tested   |
| Reconstitution   | Reconstitute at 100 µg/100 µL in DDW.  | FCM            | Not tested   |
| Buffer   | PBS [containing 2% Block Ace as a stabilizer, 0.1% Proclin as a bacteriostat]                                  | Neutralization | Not tested   |
| Storage  | This product is shipped at ambient temperature. Upon receipt, we recommend to store it immediately below -20°C | IP             | Not tested   |

**Western Blotting**
**KZ625  
(control  
antibody)**

 KO579 Rat PAG  
(anti rat PAG mAb)


Sample: rat brain tissue lysate  
 Primary antibody concentration: 10 µg/ml  
 Secondary antibody: HRP-conjugated anti-mouse IgM

Note

Reference

**WARNING AND PRECAUTION**

1. Not for diagnostic use. The safety and efficacy of product in diagnostic or other clinical uses has not been established.
2. Harmful by inhalation, in contact with skin and if swallowed. Do not breathe dust. Avoid contact with skin and eyes.
3. If contact with skin and eyes, wash all affected areas with large volume of water. If inhaled remove to fresh air. In severe case obtain medical attention.
4. Wash hand thoroughly after handling the product.
5. Do not use this product if container is broken or some contaminants are detected.
6. When preserving the product, Close the container, ensure it does not fall aside or down.
7. Dispose of the container and expired reagents in accordance with federal, state and local government regulations.
8. Do not use the container and accessories of the product for other purpose.

**取り扱い上の注意**

- この添付文書をよく読んでから使用して下さい。
1. 本品は、研究用試薬であり、医薬品その他の目的にはご使用になれません。
  2. 取り扱い中は皮膚、粘膜、着衣に触れたり、目に入らないように適切な措置を行って下さい。
  3. 誤って目や口に入った場合は、水で十分に洗い流すなどの応急処置を行い、必要があれば医師の手当を受けて下さい。
  4. 取り扱い後には手洗いを十分に行ってください。
  5. 容器の破損、異物混入等異常が認められた物は使用しないで下さい。
  6. 試薬を保管する場合は、蓋をし、転倒落下防止を確実にし、指定の貯蔵方法で保管して下さい。
  7. 使用後の容器は、廃棄物に関する規定に従って処理して下さい。
  8. 容器、付属品等の他目的への転用は保証できません。