



**K0609**

For research use only

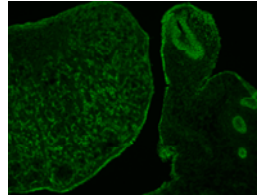
## Anti mouse Emx2 Polyclonal Antibody

<b>Code No.</b>	K0609
<b>Category</b>	Development/Differentiation
<b>Target</b>	Emx2
<b>Type</b>	Polyclonal Antibody
<b>Concentration</b>	0.25mg/ml
<b>Contents (Volume)</b>	50 $\mu$ g (200 $\mu$ L/vial)
<b>Gene ID</b>	13797
<b>Primary Source</b>	MGI:95388
<b>Synonyms</b>	Pdo: Emx2
<b>Immunogen</b>	Recombinant protein of mouse Emx2 (full length)
<b>Raised in</b>	Rabbit
<b>Purification</b>	ProteinG
<b>Source</b>	Rabbit Serum
<b>Cross Reactivity</b>	Not Tested
<b>Label</b>	Unlabeled
<b>Buffer</b>	PBS [containing 2% Block Ace as a stabilizer, 0.1% Proclin as a bacteriostat]
<b>Storage</b>	Store below -20°C. Once thawed, store at 4°C. Repeated freeze-thaw cycles should be avoided.
<b>Application</b>	ELISA, WB, IHC, ICC, IF

### Recommended Antibody Dilutions

ELISA	WB	IHC	ICC
1.0	1.0-5.0	1.0-2.0	1.0-5.0
P	FCM	F	Neutralization
NotTested	NotTested	1.0-5.0	NotTested

( $\mu$ g/ml)



IF  
Sample:  
mouse ovary

Preparation of antibodies  
Dr. Ken-ichirou Morohashi  
Biology of sex differences Department of Molecular Biology Faculty of Medical Sciences, Kyushu University, Fukuoka, JAPAN

### UniPlot Summary

Transcription factor, which in cooperation with EMX2, acts to generate the boundary between the roof and archipallium in the developing brain. May function in combinations with OTX1/2 to specify cell fates in the developing central nervous system.

### Reference

- 1) Noonan F.C. et al.: Genomics 81:58-66 (2003)
- 2) Simeone A. et al.: EMBO J. 11:2541-2550 (1992)
- 3) Simeone A. et al.: Nature 358:687-690 (1992)
- 4) Shinozaki K. et al.: Mech. Dev. 121:475-489 (2004)

Manufactured by TransGenic Inc.



COSMO BIO CO., LTD.  
Inspiration for Life Science

TOYO 2CHOME, KOTO-KU, TOKYO, 135-0016, JAPAN

URL: [http://www.cosmobio.co.jp/index\\_e.asp](http://www.cosmobio.co.jp/index_e.asp) E-mail: [export@cosmobio.co.jp](mailto:export@cosmobio.co.jp)

[Outside Japan]

[国内連絡先]

Phone : +81-3-5632-9617

Phone : +81-3-5632-9610

FAX : +81-3-5632-9618

FAX : +81-3-5632-9619