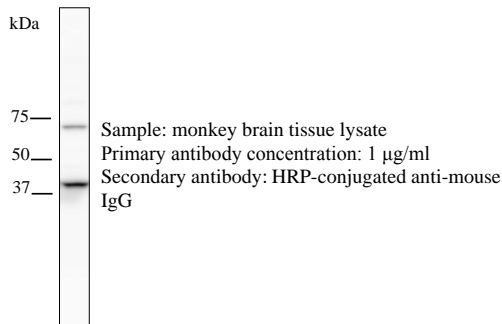
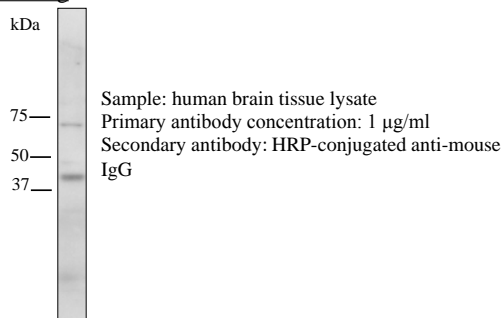
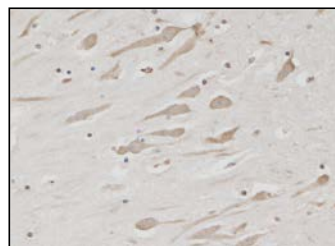


KG621 Anti Human ADORA3 Monoclonal Antibody (Clone No.1C9R)		Gene ID	140
Primary Source	HGNC:268	Keyword	
Type	Monoclonal Antibody	A3AR; AD026; bA552M11.5; RP11-552M11.7; ADORA3	
Immunogen	Partial peptide of Human ADORA3 (3rd extracellular domain)		
Raised in	Mouse		
Myeloma	P3U1		
Clone number	1C9R		
IsoType	IgG1, κ		
Source	Serum-free medium	Application	
Purification notes	ProteinG	WB	0.1-1.0 µg/mL
Cross Reactivity	human, monkey	IHC	1-10 µg/mL
Concentration	0.25 mg/mL	ICC	Not tested
Contents (Volume)	25 µg (100 µL/vial)	ELISA	1.0 µg/mL
Label	Unlabeled	FCM	Not tested
Buffer	PBS [containing 2% Block Ace as a stabilizer, 0.1% Proclin as a bacteriostat]	Neutralization	Not tested
Storage	Store at -20°C long term, store at 4°C short term. Avoid repeated freeze-thaw cycles.	IP	Not tested

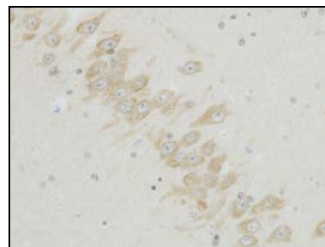
### Western Blotting



### Immunohistochemistry



Sample: human brain tissue  
Section: formalin-fixed, paraffin-embedded section  
Primary antibody concentration: 10 µg/ml  
Secondary antibody: HRP-conjugated anti-mouse IgG  
Staining: DAB



Sample: monkey brain tissue  
Section: formalin-fixed, paraffin-embedded section  
Primary antibody concentration: 10 µg/ml  
Secondary antibody: HRP-conjugated anti-mouse IgG  
Staining: DAB



This product is generated from GANP®

#### Note

- //Function: Receptor for adenosine. The activity of this receptor is mediated by G proteins which inhibits adenylyl cyclase. Possible role in reproduction.
- //Subcellular location: Cell membrane; Multi-pass membrane protein.
- //Sequence similarities: Belongs to the G-protein coupled receptor 1 family.

#### Reference

1. Sajjadi FG, et al. cDNA cloning and sequence analysis of the human A3 adenosine receptor. *Biochim. Biophys. Acta* 1993 1179:105-107.
2. Salvatore CA, et al. Molecular cloning and characterization of the human A3 adenosine receptor. *Proc. Natl. Acad. Sci. U.S.A.* 1993 90:10365-10369.
3. Clark HF, et al. The secreted protein discovery initiative (SPDI), a large-scale effort to identify novel human secreted and transmembrane proteins: a bioinformatics assessment. *Genome Res.* 2003 13:2265-2270.

#### WARNING AND PRECAUTION

1. Not for diagnostic use. The safety and efficacy of product in diagnostic or other clinical uses has not been established.
2. Harmful by inhalation, in contact with skin and if swallowed. Do not breathe dust. Avoid contact with skin and eyes.
3. If contact with skin and eyes, wash all affected areas with large volume of water. If inhaled remove to fresh air. In severe case obtain medical attention.
4. Wash hand thoroughly after handling the product.
5. Do not use this product if container is broken or some contaminants are detected.
6. When preserving the product, Close the container, ensure it does not fall aside or down.
7. Dispose of the container and expired reagents in accordance with federal, state and local government regulations.
8. Do not use the container and accessories of the product for other purpose.

#### 取り扱い上の注意

- この添付文書をよく読んでから使用して下さい。
1. 本品は、研究用試薬であり、医薬品その他の目的にはご使用になれません。
  2. 取り扱い中は皮膚、粘膜、着衣に触れたり、目に入らないように適切な措置を行って下さい。
  3. 誤って目や口に入った場合は、水で十分に洗い流すなどの応急処置を行い、必要があれば医師の手当を受けて下さい。
  4. 取り扱い後には手洗いを十分に行なって下さい。
  5. 容器の破損、異物混入等異常が認められた物は使用しないで下さい。
  6. 試薬を保管する場合は、蓋をし、転倒落下防止を確実にし、指定の貯蔵方法で保管して下さい。
  7. 使用後の容器は、廃棄物に関する規定に従って処理して下さい。
  8. 容器、付属品等の他目的への転用は保証できません。