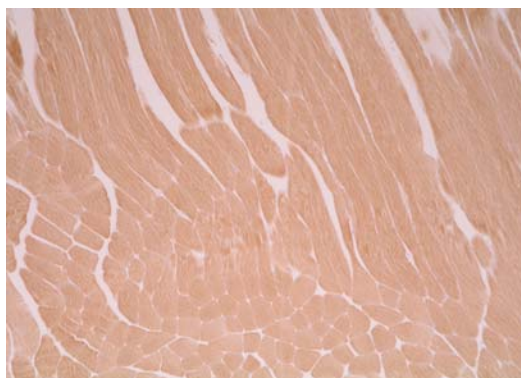




KG409 Anti Mouse Mylpf Polyclonal Antibody		Gene ID	17907
Primary Source	MGI:97273		
Type	Polyclonal	Keyword	
Immunogen	Partial peptide of Mouse Mylpf	Mlc2; MLC-2; 2410014J02Rik; Mylpf myosin light chain, phosphorylatable, fast skeletal muscle	
Raised in	Rabbit		
Myeloma	-		
Clone number	-		
Isotype	-		
Source	Rabbit serum	Application	
Purification notes	Antigen Affinity	WB	Not tested
Cross Reactivity	Not yet tested in other species.	IHC	5.0-10 µg/mL
Concentration	0.25 mg/mL	ICC	Not tested
Contents (Volume)	25 µg (100 µL/vial)	ELISA	Not tested
Label	Unlabeled	FCM	Not tested
Buffer	PBS [containing 2 % Block Ace as a stabilizer, 0.1 %Proclin as a bacteriostat]	Neutralization	Not tested
Storage	Store below -20 °C. Once thawed, store at 4 °C. Repeated freeze-thaw cycles should be avoided.	IP	Not tested

Immunohistochemistry



Sample : Mouse muscle (paraffin section)

Note

Mylpf (myosin light chain, phosphorylatable, fast skeletal muscle), also known as Mlc2/Mlc-2, is expressed specifically in skeletal muscles of neonates and adults. Mylpf is critical important for fast and slow skeletal muscle development.

Note

Mylpf は、Mlc2/Mlc-2 としても知られており、新生仔及び成体の骨格筋に特異的に発現しています。Mylpf は骨格筋の発達に重要な役割を果たしています。

Reference

1 Wang Y., et al.: Fast skeletal muscle regulatory light chain is required for fast and slow skeletal muscle development.

FASEB J. 2007 Jul;21(9):2205-14.  
Epub 2007 Mar 13.  
Erratum in: FASEB J. 2007 Aug;21(10):2633.

**WARNING AND PRECAUTION**

- Not for diagnostic use. The safety and efficacy of product in diagnostic or other clinical uses has not been established.
- Harmful by inhalation, in contact with skin and if swallowed. Do not breathe dust. Avoid contact with skin and eyes.
- If contact with skin and eyes, wash all affected areas with large volume of water. If inhaled remove to fresh air. In severe case obtain medical attention.
- Wash hand thoroughly after handling the product.
- Do not use this product if container is broken or some contaminants are detected.
- When preserving the product, Close the container, ensure it does not fall aside or down.
- Dispose of the container and expired reagents in accordance with federal, state and local government regulations.
- Do not use the container and accessories of the product for other purpose.

**取り扱い上の注意**

この添付文書をよく読んでから使用して下さい。

- 本品は研究用試薬であり、医薬品その他の目的にはご使用になれません。
- 取り扱い中は皮膚、粘膜、着衣に触れたり、目に入らないように適切な措置を行って下さい。
- 試薬が誤って目や口に入った場合には、水で十分に洗い流すなどの応急処置を行い、必要があれば医師の手当を受けて下さい。
- 取り扱い後は手洗いを十分に行って下さい。
- 容器の破損、異物混入等異常が認められた物は使用しないで下さい。
- 試薬を保管する場合は、蓋をし、転倒落下防止を確実にし、指定の貯蔵方法で保管して下さい。
- 使用後の容器は、廃棄物に関する規定に従って処理して下さい。
- 容器、付属品等の他目的への転用は保証できません。

Manufactured by Trans Genic Inc.



COSMO BIO Co., LTD.  
Inspiration for Life Science

TOYO 2CHOME, KOTO-KU, TOKYO, 135-0016, JAPAN  
http://www.cosmobio.co.jp e-mail : export@cosmobio.co.jp  
Phone : +81-3-5632-9617 FAX : +81-3-5632-9618