



KC598

For research use only

Anti Human AKR7A3 Monoclonal Antibody

Clone No. 2B8

This product is generated from GANP® mice



Code No. KC598
Target AKR7A3
Category Cancer
Gene ID 22977
Primary Source HGNC:390
Synonyms AFAR2

Type Monoclonal Antibody
Immunogen Partial peptide of Human AKR7A3
(Central region, 173-185aa)

Raised in GANP® mouse

Myeloma P3U1

Clone number 2B8

Purification ProteinG

Source Serum-free medium

Isotype IgG2b, κ

Cross Reactivity Human, Rat

Label Unlabeled

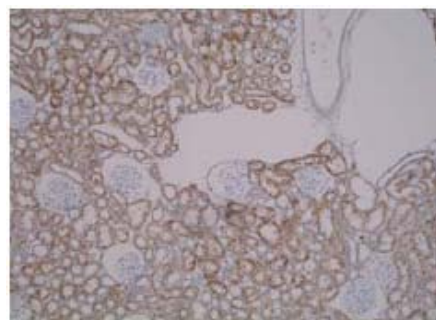
Concentration 0.25 mg/mL

Contents (Volume) 50 μ g (200 μ L/vial)

Buffer PBS [containing 2% Block Ace as a stabilizer, 0.1% Proclin as a bacteriostat]

Storage Store at - 20°C long term, store at 4°C short term. Avoid repeated freeze-thaw cycles.

Application ELISA, IHC, WB



[IHC] Rat kidney tissue

ELISA	WB	IHC	ICC
1.0	10-20	5.0-10	Not tested
IP	FCM	IF	Neutralization
Not tested	Not tested	Not tested	Not tested

(μ g/mL)

Reference

- "cDNA cloning, expression and activity of a second human aflatoxin B1-metabolizing member of the aldo-keto reductase superfamily, AKR7A3." Knight L.P. et al. Carcinogenesis 20:1215-1223(1999) [PubMed: 10383892] [Abstract]. Cited for: NUCLEOTIDE SEQUENCE [MRNA], CHARACTERIZATION, VARIANTS MET-138; ASP-215 AND ALA-323. Tissue: Liver.
- "Aflatoxin B1 aldehyde reductase (AFAR) genes cluster at 1p35-1p36.1 in a region frequently altered in human tumour cells." Pramli C. et al. Oncogene 22:4765-4773(2003) [PubMed: 12879023] [Abstract]. Cited for: NUCLEOTIDE SEQUENCE [MRNA], TISSUE SPECIFICITY, VARIANTS ASP-215 AND ALA-323.
- "The DNA sequence and biological annotation of human chromosome 1." Gregory S.G. et al. Nature 441:315-321(2006) [PubMed: 16710414] [Abstract]. Cited for: NUCLEOTIDE SEQUENCE [LARGE SCALE GENOMIC DNA].

UniPlot Summary

Function// Can reduce the dialdehyde protein-binding form of aflatoxin B1 (AFB1) to the non-binding AFB1 dialcohol. May be involved in protection of liver against the toxic and carcinogenic effects of AFB1, a potent hepatocarcinogen.

Subunit structure// Homodimer.

Subcellular location// Cytoplasm.

Tissue specificity// Expressed in colon, kidney, liver, pancreas, adenocarcinoma and endometrium.

Sequence similarities// Belongs to the aldo/keto reductase 2 family.

Manufactured by Trans Genic Inc.



COSMO BIO CO., LTD.

Inspiration for Life Science

TOYO 2CHOME, KOTO-KU, TOKYO, 135-0016, JAPAN

http://www.cosmobio.co.jp e-mail : export@cosmobio.co.jp

Phone : +81-3-5632-9617 FAX : +81-3-5632-9618