



POLYCLONAL ANTIBODY

For research use only. Not for clinical diagnosis.

Catalog No. COP-080058

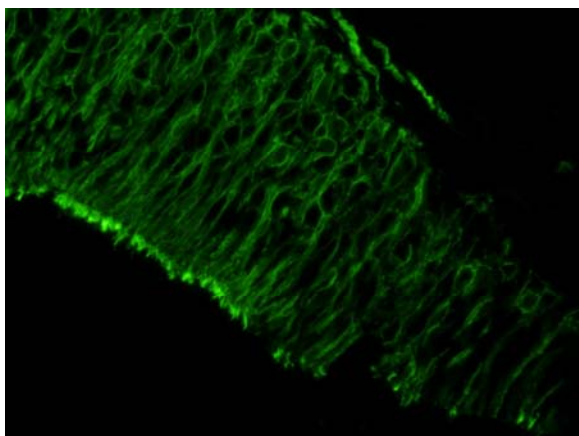
Anti G (olf)

Product type	Primary antibodies
Host	Rabbit
Source	Affinity purified by Protein A
Form	PBS (pH7.4) with less than 0.1% NaN ₃ as a preservative.
Volume	100 µl
Concentration	5.87 mg/ml
Immunogen	Mixed synthetic peptide : NH ₂ - C+QLQKERLAYKAT -COOH + NH ₂ - C+DAVPDAGEDPKVT -COOH
Antigen	Synthetic peptide : amino acids 35-50
Isotype	IgG
Cross reactivity	<i>Xenopus laevis</i> , <i>Bufo japonicus</i>

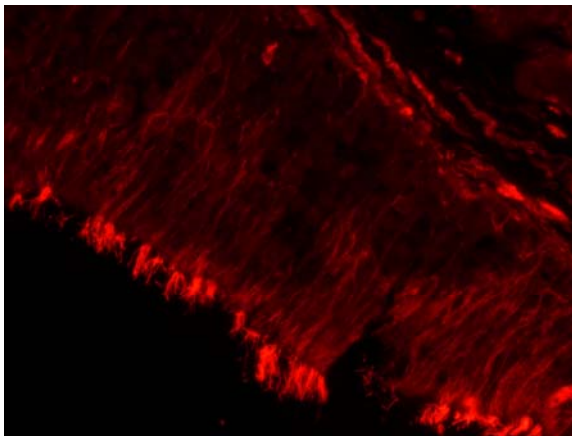
Application notes **Recommended use:** WB, IHC, ELISA
Recommended dilutions
•**Western Blot:** 1/1,000-1/5,000. Predicted molecular weight: about 45kDa
•**Immunohistochemistry:** 1/500-1/1,000
•**ELISA:** 1/50,000
Optimal dilutions/concentrations should be determined by the end user.

Storage Store below -20°C (below -80°C for prolonged storage).
Aliquot to avoid cycles of freeze/thaw.

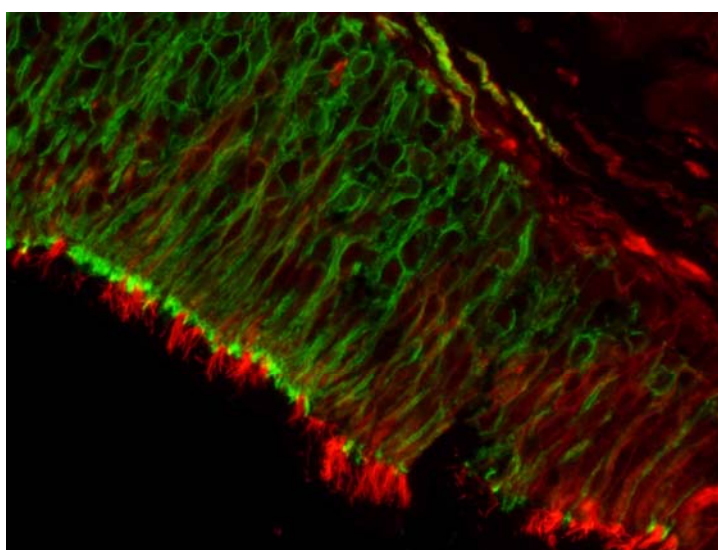
References Hagino-Yamagishi K, Nakazawa H.
Involvement of Gα(olf) -expressing neurons in the vomeronasal system of *Bufo japonicus*.
J Comp Neurol. 2011 Nov 1;519(16):3189-201. Fig.3,5 and 6.



(Fig1)



(Fig2)



(FIG3)

IHC result for Myoepithelial cell layers of Vomeronasal nerve from *Bufo japonicus formosus* stained with
(Fig1) Anti GO monoclonal
(Fig2) COP-080058
(Fig3) Merge

For research use only. Not for clinical diagnosis.

Manufactured by Operon Biotechnologies, K.K



COSMO BIO CO., LTD.

Inspiration for Life Science

TOYO 2CHOME, KOTO-KU, TOKYO, 135-0016, JAPAN

URL: <http://www.cosmobio.co.jp>

e-mail: export@cosmobio.co.jp

[Outside Japan] Phone : +81-3-5632-9617

[国内連絡先] Phone : +81-3-5632-9610

FAX : +81-3-5632-9618

FAX : +81-3-5632-9619