



POLYCLONAL ANTIBODY

For research use only. Not for clinical diagnosis.

Catalog No. COP-080056

Anti AtPCaP1

Product type	Primary antibodies
Host	Rabbit
Source	Serum
Form	Liquid
Volume	100 µl
Concentration	Less than 0.1% NaN ₃ as a preservative.
Specificity	AtPCaP1
Antigen	Peptide (Cys-TEEPAKTEGTSGEKE)
Isotype	

Application notes

WB

Recommended use

Recommended dilutions

Western Blot: ~1/2,000

Optimal dilutions/concentrations should be determined by the end user.

Staining Pattern

Cross reactivity

AtPCaP1, *Arabidopsis thaliana* plasma membrane cation-binding protein-1 (225 amino acid residues; At4g20260)

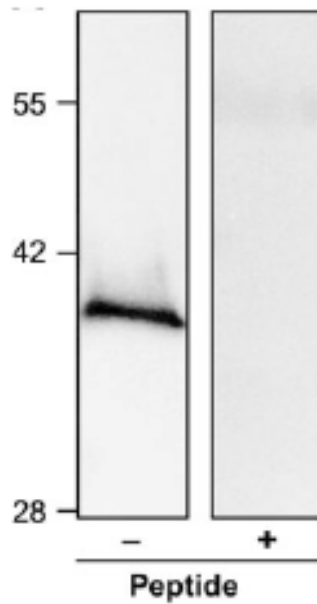
Storage

Store below -20°C

Aliquot to avoid cycles of freeze/thaw.

References

- 1) Ide, Y., Nagasaki, N., Tomioka, R., Suito, M., Kamiya, T. and Maeshima, M. (2007) Molecular properties of a novel, hydrophilic cation-binding protein associated with the plasma membrane. *J. Exp. Botany*, 58: 1173-1183.
- 2) Nagasaki, N., Tomioka, R. and Maeshima, M. (2008) A hydrophilic cation-binding protein of *Arabidopsis thaliana*, AtPCaP1, is localized to plasma membrane via N-myristoylation and interacts with calmodulin and the phosphatidylinositol phosphates PtdIns(3,4,5)P₃ and PtdIns(3,5)P₂. *FEBS J.* 275: 2267-2282.



Crude membrane fraction (30 ug) prepared from Arabidopsis shoots was subjected to immunoblotting with the antibody in the absence (lane 1) or presence (lane 2) of the corresponding antigen peptide at a concentration of 2 ug/ml.

For research use only. Not for clinical diagnosis.

Manufactured by Operon Biotechnologies, K.K



COSMO BIO Co., LTD.

Inspiration for Life Science

TOYO 2CHOME, KOTO-KU, TOKYO, 135-0016, JAPAN

URL: <http://www.cosmobio.co.jp>

e-mail: export@cosmobio.co.jp

[Outside Japan] Phone : +81-3-5632-9617

[国内連絡先] Phone : +81-3-5632-9610

FAX : +81-3-5632-9618

FAX : +81-3-5632-9619