



POLYCLONAL ANTIBODY

For research use only. Not for clinical diagnosis.

Catalog No. COP-080053

Anti MARBP

Product type	Primary antibodies
Host	Rabbit
Source	Serum
Form	Liquid
	Less than 0.1% NaN ₃ as a preservative.
Volume	100 µl
Concentration	
Specificity	MARBP
Antigen	Recombinant tobacco MARBP
Isotype	

Application notes WB, Immunostaining

Recommended use

Recommended dilutions

Western Blot: ~1/2,000

Optimal dilutions/concentrations should be determined by the end user.

Staining Pattern

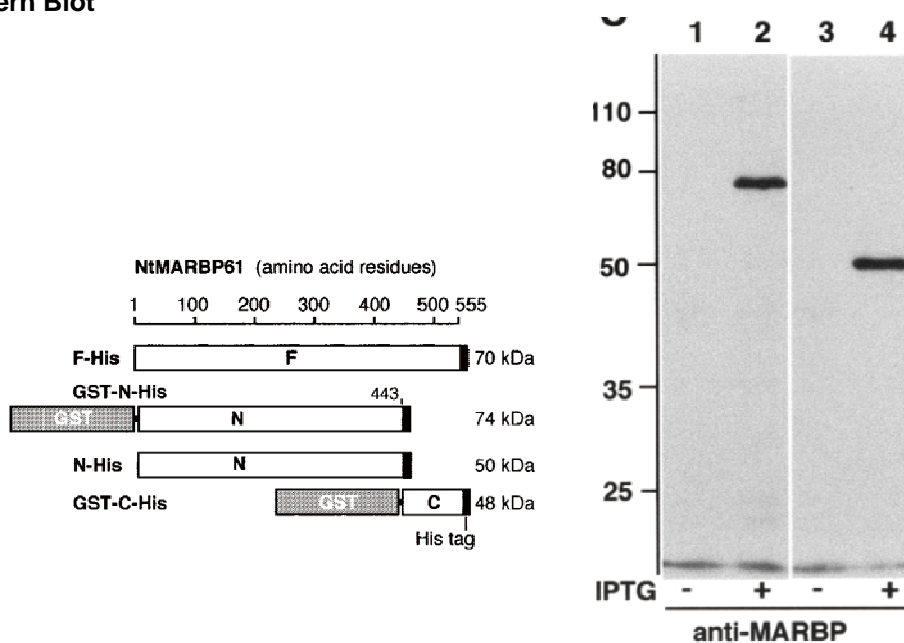
Cross reactivity Matrix attached region-binding protein (MARBP), 70 kDa
(Probably, the antibody reacts with the antigen in most plants and is useful for detection of the antigen and nucleoli of plant cells)

Storage Store below -20°C
Aliquot to avoid cycles of freeze/thaw.

References 1) Fujiwara, S., Matsuda, N., Sonobe, S., Maeshima, M. (2002) Molecular properties of a matrix attached region-binding protein located in the nucleoli of tobacco cells. Plant Cell Physiol., 43: 1558-1567.



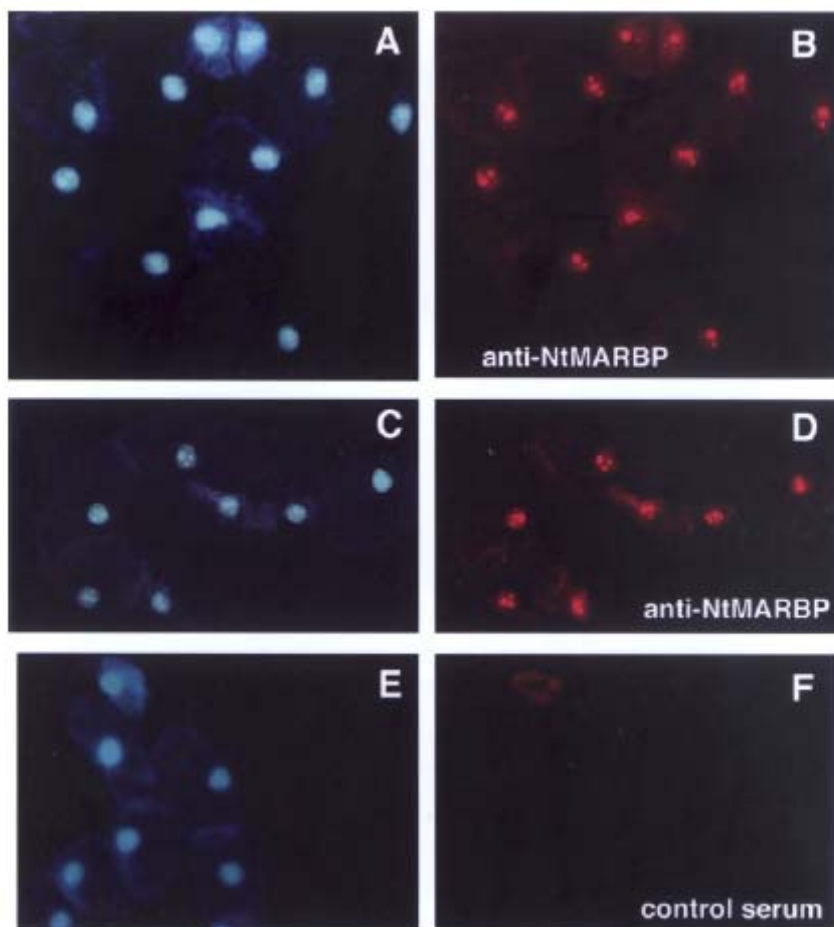
Western Blot



Lanes 1 and 2: cell extract of *E. coli* expressing GST-N(MARBP)-His protein (74 kDa).
Lanes 3 and 4: cell extract of *E. coli* expressing GST-C(MARBP)-His protein (50 kDa).
E. coli was cultured in the presence (lanes 2 and 4) or absence (lanes 1 and 3) of IPTG. These recombinant MARBP was clearly detected with anti-MARBP.



Immunostaining of nucleoli



Immunolocalization of MARBP in tobacco cells. Tobacco BY-2 cells subcultured for 4 d were harvested, fixed with formamide, and then treated with anti-NtMARBP (B, D), and control serum (F) antibodies. The antigen was visualized with Cy3-coupled goat anti-(rabbit IgG) antibody (B, D, F). The same cells were treated with DAPI to visualize nuclei (A, C, E). Images of Cy3 and DAPI fluorescence were observed under a fluorescent microscope.

For research use only. Not for clinical diagnosis.

Manufactured by Operon Biotechnologies, K.K



COSMO BIO Co., LTD.

Inspiration for Life Science

TOYO 2CHOME, KOTO-KU, TOKYO, 135-0016, JAPAN

URL: <http://www.cosmobio.co.jp>

e-mail: export@cosmobio.co.jp

[Outside Japan] Phone : +81-3-5632-9617

[国内連絡先] Phone : +81-3-5632-9610

FAX : +81-3-5632-9618

FAX : +81-3-5632-9619