



MONOCLONAL ANTIBODY

Catalog No. YCU-MK-BA01

Anti A β

Product type	Primary antibodies
Host	Mouse
Source	
Form	Liquid PBS (pH7.2) with 0.02% NaN ₃ as a preservative
Volume	100 μ l
(Concentration)	(1.0 mg/ml)
Specificity	Recognizes A β ₁₋₁₆ , A β _{1-40/42} and β -amyloid precursor proteins (APPs).
Antigen	Human A β (β -amyloid) A synthesized peptide corresponding to amino acid residues 1-40.
Clone	59
Isotype	

Application notes WB (Not tested in other applications.)

Recommended use

Recommended dilutions

Western blotting, 1/1000 - 1/2000

Predicted molecular weight: 4 kDa for A β _{1-40/42} and 105kDa for soluble APP (sAPP).

Optimal dilutions/concentrations should be determined by the end user.

Staining Pattern

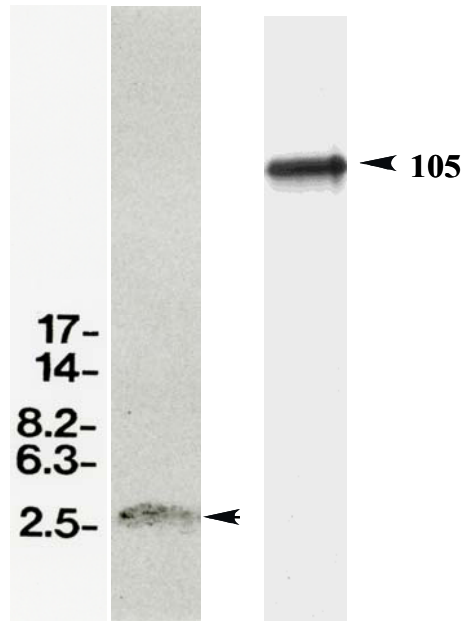
Cross reactivity Reacts with human antigen. Not tested for other species.

Storage Store below -20°C (below -70°C for prolonged storage).

Aliquot to avoid cycles of freeze/thaw.

References

- 1) Higashi, S. and Miyazaki, K.: Novel processing of β -amyloid precursor protein catalyzed by membrane type 1 matrix metalloproteinase releases a fragment lacking the inhibitor domain against gelatinase A. *Biochemistry*, 42: 6514-6526, 2003
- 2) Higashi, S., Miyazaki, K.: Identification of a region of beta-amyloid precursor protein essential for its gelatinase A inhibitory activity. *J Biol Chem*. 278(16): 14020-14028, 2003
- 3) Miyata, S., Koshikawa, N., Higashi, S., Miyagi, Y., Nagashima, Y., Yanoma, S., Kato, Y., Yasumitsu H., Miyazaki, K.: Expression of trypsin in human cancer cell lines and cancer tissues and its tight binding to soluble form of Alzheimer amyloid precursor protein in culture. *J Biochem*. 125(6): 1067-1076, 1999
- 4) Koshikawa, N., Nakamura, T., Tsuchiya, N., Isaji, M., Yasumitsu, H., Umeda, M., Miyazaki, K.: Purification and identification of a novel and four known serine proteinase inhibitors secreted by human glioblastoma cells. *J Biochem*. 119(2): 334-339, 1996



Western Blot Analysis for 0.2 μ g of Synthetic A β Peptide (left) and extracted supernatant of Human Fibrosarcoma Cell Line HT1080 (right).

For research use only. Not for clinical diagnosis.



COSMO BIO Co., LTD.

【JAPAN】
TOYO EKIMAE BLDG. 2-20, TOYO 2-CHOME,
KOTO-KU. TOKYO 135-0016, JAPAN
Phone: +81-3-5632-9610
FAX: +81-3-5632-9619
URL: <https://www.cosmobio.co.jp/>



COSMO BIO USA

【Outside Japan】
2792 Loker Ave West, Suite 101
Carlsbad, CA 92010, USA
email: info@cosmobioussa.com
Phone/FAX: (+1) 760-431-4600
URL: www.cosmobioussa.com