

## MONOCLONAL ANTIBODY

Catalog No. YCU-MK-AP01

# Anti APP ( $\beta$ -amyloid precursor protein)

Product type	Primary antibodies
Host	Mouse
Source	
Form	Liquid PBS (pH7.2) with 0.02% NaN <sub>3</sub> as a preservative.
Volume	100 $\mu$ l
(Concentration)	(1.0 mg/ml)
Specificity	Recognizes a sAPP sequence between residues 580 and 671. It also detects membrane-bound APP.
Antigen	Human soluble $\beta$ -amyloid precursor protein (sAPP)
Clone	278
Isotype	

**Application notes** WB (Not tested in other applications.)

### Recommended use

### Recommended dilutions

Western blotting, 1/1000 to 1/2000 depending on detection method.

Predicted molecular weight: 105 kDa for sAPP and 115 kDa for Membrane-bound mature APP.

Optimal dilutions/concentrations should be determined by the end user.

### Staining Pattern

**Cross reactivity** Reacts with human antigen. Not tested for other species.

**Storage** Store below -20°C (below -70°C for prolonged storage).

Aliquot to avoid cycles of freeze/thaw.

### References

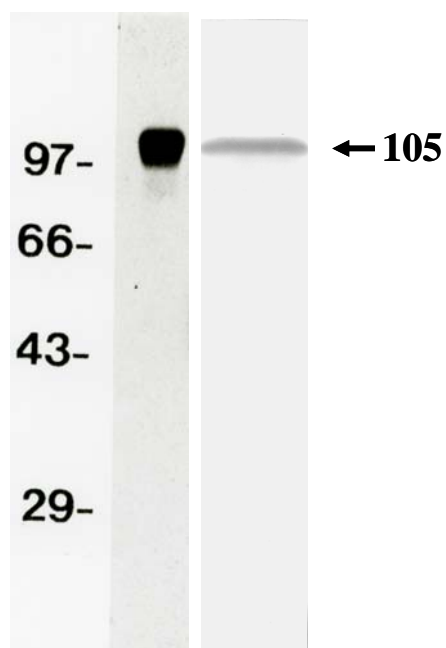
- 1) Higashi, S. and Miyazaki, K.: Novel processing of  $\beta$ -amyloid precursor protein catalyzed by membrane type 1 matrix metalloproteinase releases a fragment lacking the inhibitor domain against gelatinase A. Biochemistry, 42: 6514-6526, 2003.
- 2) Higashi, S., Miyazaki, K.: Identification of a region of beta-amyloid precursor protein essential for its gelatinase A inhibitory activity. J Biol Chem. 278(16): 14020-14028, 2003
- 3) Miyata, S., Koshikawa, N., Higashi, S., Miyagi, Y., Nagashima, Y., Yanoma, S., Kato, Y., Yasumitsu H., Miyazaki, K.: Expression of trypsin in human cancer cell lines and cancer tissues and its tight binding to soluble form of Alzheimer amyloid precursor protein in culture. J Biochem. 125(6): 1067-1076, 1999
- 4) Koshikawa, N., Nakamura, T., Tsuchiya, N., Isaji, M., Yasumitsu, H., Umeda, M., Miyazaki, K.: Purification and identification of a novel and four known serine proteinase inhibitors secreted by human glioblastoma cells. J Biochem. 119(2): 334-339, 1996

*For research use only. Not for clinical diagnosis.*



**COSMO BIO CO., LTD.**  
Inspiration for Life Science

**Anti APP ( $\beta$ -amyloid precursor protein)**



Western Blot Analysis for purified APP (soluble) and supernatant of Human Fibrosarcoma Cell Line HT1080 (left).



**COSMO BIO CO., LTD.**

Inspiration for Life Science

TOYO 2CHOME, KOTO-KU, TOKYO, 135-0016, JAPAN

URL: <http://www.cosmobio.co.jp>

e-mail: [export@cosmobio.co.jp](mailto:export@cosmobio.co.jp)

[Outside Japan] Phone : +81-3-5632-9617

[国内連絡先] Phone : +81-3-5632-9610

FAX : +81-3-5632-9618

FAX : +81-3-5632-9619