



POLYCLONAL ANTIBODY

For research use only. Not for clinical diagnosis.

Catalog No. YCU-M-MCT2A

Anti Monocarboxylate Transporter 2 (MCT2)**BACKGROUND**

モノカルボン酸トランスポーター (MCT) は H⁺ (プロトン) と共役することで、主に乳酸、ピルビン酸を輸送する膜タンパク質である。MCT2 は 12 回膜貫通部位をもち、その N 末端、C 末端は細胞質内に存在する。MCT2 は特に肝臓、精巣に発現がみられる。本抗体は、MCT2 の N 末端 2 から 19 残基のペプチドを抗原とする。

Product type	Primary antibodies
Host	Rabbit
Source	Whole Serum
Form	Liquid PBS (pH7.4) with 0.1% NaN ₃ as a preservative.
Volume	200 µl
Concentration	0.64 mg/ml
Specificity	Monocarboxylate Transporter 2 (MCT2)
Antigen	Mouse Monocarboxylate transporter 2 (MCT2) (peptide corresponding to amino acids 2-19)
Isotype	

Application notes

WB

Recommended use**Recommended dilutions**

Western Blot: 1/1,000-1/2,000. Predicted molecular weight: about 43 kDa

Optimal dilutions/concentrations should be determined by the end user.

Staining Pattern**Cross reactivity**

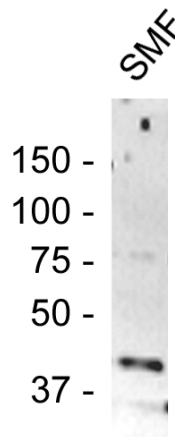
Mouse. Not yet tested other species.

Storage

Store below -20°C (below -70°C for prolonged storage). Aliquot to avoid cycles of freeze/thaw.

References

Watanabe-Kaneko, K., et al. 2007, The synaptic scaffolding protein Delphilin interacts with monocarboxylate transporter 2. Neuroreport. 18 (5): 489-493.



Mouse cerebellum synaptic membrane fraction (SMF) was resolved by electrophoresis, transferred to PVDF and probed with anti-mouse monocarboxylate transporter 2 antibody. Proteins were visualized using a goat anti-rabbit secondary antibody conjugated to HRP and chemiluminescence detection system.

For research use only. Not for clinical diagnosis.



COSMO BIO Co., LTD.

【JAPAN】

TOYO EKIMAE BLDG. 2-20, TOYO 2-CHOME,
KOTO-KU. TOKYO 135-0016, JAPAN
Phone: +81-3-5632-9610
FAX: +81-3-5632-9619
URL: <https://www.cosmobio.co.jp/>



COSMO BIO USA

【Outside Japan】

2792 Loker Ave West, Suite 101
Carlsbad, CA 92010, USA
email: info@cosmobioussa.com
Phone/FAX: (+1) 760-431-4600
URL: www.cosmobioussa.com