



For research use only. Not for clinical diagnosis.

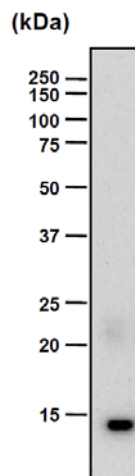
Catalog No. TCS-010

Anti Chondromodulin, clone bCHM-10

Lot number	1001
Host animal	Mouse
Immunogen	Native chondromodulin-I purified from bovine cartilage
Purity	Affinity purified
Concentration	1.0 mg/ml
Isotype	IgG2b
Volume	100 ul
Formulation	PBS (pH7.4)
Cross Reactivity	Human, mouse, rat, bovine
Application	<ul style="list-style-type: none">▪ Immunoprecipitation▪ Western blotting▪ Immunohistochemistry

Optimal dilutions/concentrations should be determined by the end user.

Western blot analysis



Rib cartilage extract (2.5 µg protein) from 4-week-old rat was subjected to Western blot analysis using bChM-10 antibody at 500-fold dilution. ChM-1 is detected as a diffuse band of 20-25 kDa due to the variation of the glycosylation. This antibody also detects the N-terminal glycosylation domain-deleted form of ChM-1 (14 kDa ChM-1), when tissue extracts are analyzed.



Storage

Store below - 20 (below - 70 for prolonged storage).

Aliquot to avoid cycles of freeze/thaw.

Reference

- 1) Hiraki Y. et al. Identification of Chondromodulin I as a novel endothelial cell growth inhibitor. J.Biol.Chem. 271, 22657-62 (1996).
- 2) Hiraki Y. et al. Molecular cloning of human chondromodulin-I , a cartilage derived growth modulating factor, and its expression in Chinese hamster ovary cells. Eur. J.Biochem. 260, 869-78 (1999).
- 3) Nakamichi Y. et al. Chondromodulin-I is a bone remodeling factor Mol.Cell.Biol. 23, 636-44 (2003).
- 4) Yoshioka Y. et al. Chondromodulin-I maintains cardiac valvular function by preventing angiogenesis. Nature Med. 12, 1151-59 (2006).

For research use only. Not for clinical diagnosis.



COSMO BIO CO., LTD.

Inspiration for Life Science

TOYO 2CHOME, KOTO-KU, TOKYO, 135-0016, JAPAN

URL: <http://www.cosmobio.co.jp>

e-mail: export@cosmobio.co.jp

[Outside Japan] Phone : +81-3-5632-9617

[国内連絡先] Phone : +81-3-5632-9610

FAX : +81-3-5632-9618

FAX : +81-3-5632-9619