

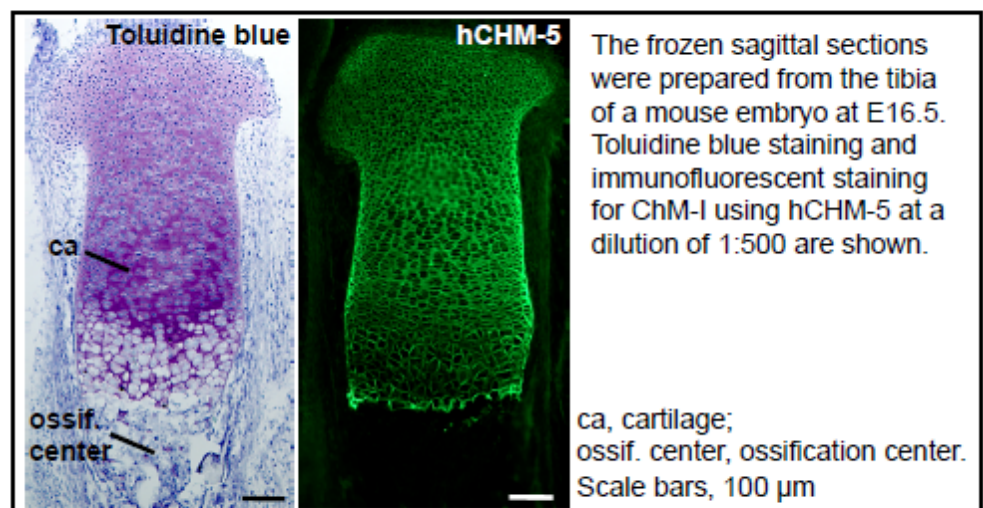


## Anti Chondromodulin, clone hCHM-05

<b>Host animal</b>	Mouse
<b>Immunogen</b>	Recombinant human chondromodulin-I
<b>Purity</b>	Affinity purified
<b>Concentration</b>	1.0 mg/ml
<b>Isotype</b>	IgG1
<b>Volume</b>	100 ul
<b>Formulation</b>	PBS (pH7.4)
<b>Cross Reactivity</b>	Human, mouse, rat, bovine
<b>Application</b>	<ul style="list-style-type: none"><li>▪ Immunoprecipitation</li><li>▪ Western blotting</li><li>▪ Immunohistochemistry</li></ul>

Optimal dilutions/concentrations should be determined by the end user.

### Immunostaining of mouse cartilage





**Storage**

Store below  $-20^{\circ}\text{C}$  (below  $-70^{\circ}\text{C}$  for prolonged storage).

Aliquot to avoid cycles of freeze/thaw.

**Reference**

- 1) Hiraki Y. et al. Identification of Chondromodulin I as a novel endothelial cell growth inhibitor. J.Biol.Chem. 271, 22657-62 (1996).
- 2) Hiraki Y. et al. Molecular cloning of human chondromodulin-I , a cartilage derived growth modulating factor, and its expression in Chinese hamster ovary cells. Eur. J.Biochem. 260, 869-78 (1999).
- 3) Nakamichi Y. et al. Chondromodulin-I is a bone remodeling factor Mol.Cell.Biol. 23, 636-44 (2003).
- 4) Yoshioka Y. et al. Chondromodulin-I maintains cardiac valvular function by preventing angiogenesis. Nature Med. 12, 1151-59 (2006).
- 5) Miura S. et al. Impairment of VEGF-A-stimulated lamellipodial extensions and motility of vascular endothelial cells by chondromodulin-1, a cartilage-derived angiogenesis inhibitor. Exp.Cell.Res. 316, 775-788 (2010)

*For research use only. Not for clinical diagnosis.*



COSMO BIO CO., LTD.

Inspiration for Life Science

TOYO 2CHOME, KOTO-KU, TOKYO, 135-0016, JAPAN

URL: <http://www.cosmobio.co.jp>

e-mail: [export@cosmobio.co.jp](mailto:export@cosmobio.co.jp)

[Outside Japan] Phone : +81-3-5632-9617

[国内連絡先] Phone : +81-3-5632-9610

FAX : +81-3-5632-9618

FAX : +81-3-5632-9619

