



# Anti Canine Endoglin (CD105)

## Background

Endoglin (CD105) is mainly expressed on endothelial cells of newly formed vessels and increased under hypoxic environment. Thus, endoglin could be used as a powerful marker of neovascularization in solid malignancies including mammary carcinoma as well as regenerating stage of injury or inflammation.

---

Product type	Primary Antibody
Immunogen	Canine Endoglin(a.a.1 - 148)
Raised in	Mouse
Myeloma	P3U1
Clone number	1G1G4
Isotype	IgG2a, $\kappa$
Source	Culture supernatant
Purification	-----
Buffer	Supernatant with 0.002% $\text{NaN}_3$ as preservative
Concentration	1 mg/mL
Volume	50 $\mu\text{L}$
Label	Unlabeled
Specificity	Canine Endoglin
Storage	Store at 4°C
Reference	-----

---

Recommended Dilutions	Western blotting (1 : 1,000) , Immunohistochemistry (1 : 50), ELISA (1 : 10,000)
-----------------------	--

Other applications have not been tested or not reactive.  
Optimal dilutions/concentrations should be determined by the end user.

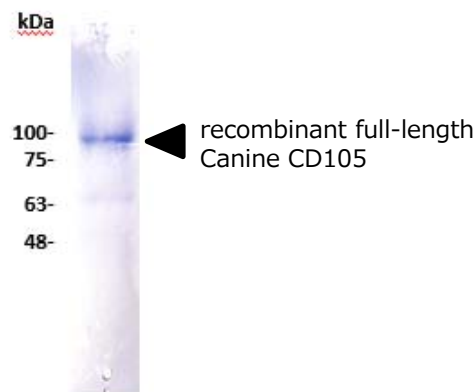


Fig 1. Western blot analysis

[Buffer contents]

Blocking : 0.5% Casein / Tris-saline (150 mM NaCl/10 mM Tris-HCl, pH 7.6)

Primary antibody : 0.5% Casein / Tris-saline (150 mM NaCl/10 mM Tris-HCl, pH 7.6)

Secondary antibody : ALP-labeled 2nd antibody in PBS-T

Detection : NBT/BCIP

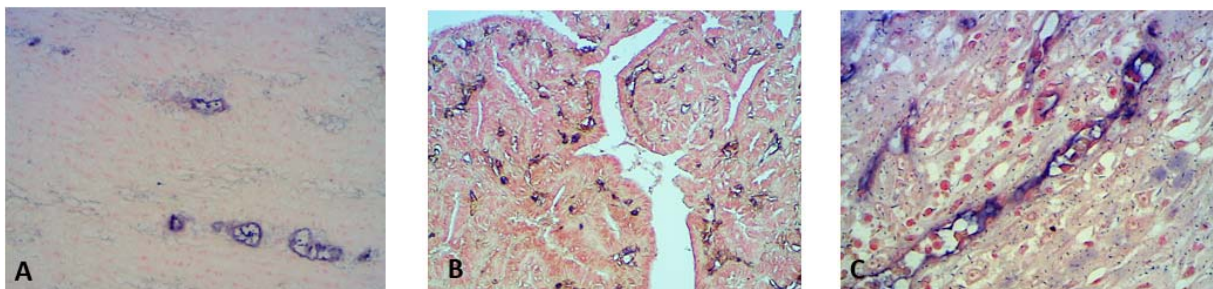


Fig 2. Immunohistochemistry

All tissues were fixed with 10% formalin and embedded in paraffin wax. After deparaffinization, sections were pretreated with 6 M urea/50 mM Tris-HCl, pH 7.6 for 30 min at room temperature.

A. The antibody reacted endothelial cells in capillary vessels, which branched into tunica media (vasa vasorum) of canine normal aorta (ALP-labeled 2<sup>nd</sup> antibody/nuclear fast red).

B. The antibody reacted endothelial cells in newly generated capillary vessels (neovascularization) observed in canine mammary carcinoma (ALP-labeled 2<sup>nd</sup> antibody/nuclear fast red). (case1)

C. The antibody reacted endothelial cells in newly generated capillary vessels (neovascularization) observed in canine mammary carcinoma (ALP-labeled 2<sup>nd</sup> antibody/nuclear fast red). (case2)

For research use only, Not for diagnostic use.



**COSMO BIO Co., LTD.**

【JAPAN】  
TOYO EKIMAE BLDG. 2-20, TOYO 2-CHOME,  
KOTO-KU, TOKYO 135-0016, JAPAN  
Phone: +81-3-5632-9610  
FAX: +81-3-5632-9619  
URL: <https://www.cosmobio.co.jp/>



**COSMO BIO USA**

【Outside Japan】  
2792 Loker Ave West, Suite 101  
Carlsbad, CA 92010, USA  
email: [info@cosmobiousa.com](mailto:info@cosmobiousa.com)  
Phone/FAX: (+1) 760-431-4600  
URL: [www.cosmobiousa.com](http://www.cosmobiousa.com)