

POLYCLONAL ANTIBODY

For research use only. Not for clinical diagnosis.

Catalog No. SU-IZ-P03

Anti mouse SQN-5 (serpinb3a)

BACKGROUND

Anti-serpinb3a antibody is a rabbit polyclonal antibody which obtained from the immunization with purified, E. coli-derived, recombinant mouse serpinb3a. This antibody can be used for the detection of serpinb3a by immunoblotting and immunostaining.

Product type	Primary antibodies
Host	Rabbit
Source	Serum
Form	Liquid
	Serum with 0.05% NaN ₃ as a preservative.
Volume	100 ul
Specificity	serpinb3a, serpinb3b, serpinb3c
Antigen	Recombinant mouse serpinb3a expressed by E. coli

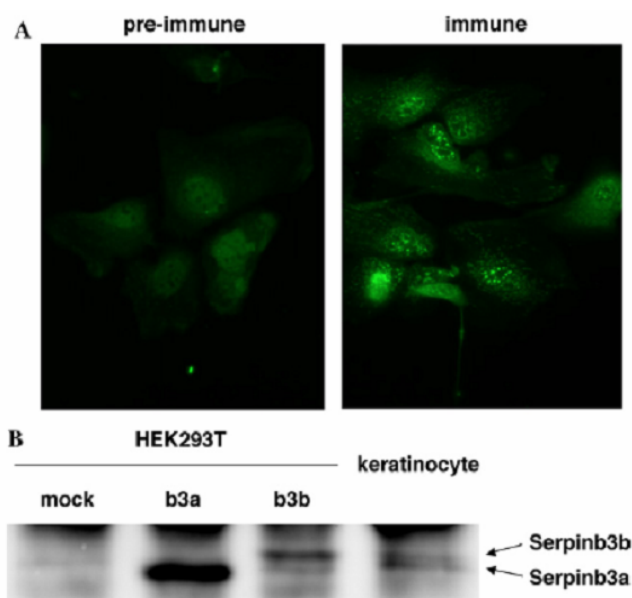
Application notes

WB, IHC

Recommended dilutions

Western blotting, 1/100 to 1/1,000 Immunohistochemistry, 1/50 to 1/500

Optimal dilutions/concentrations should be determined by the end user.



Production and secretion of Serpinb3a and Serpinb3b from mouse keratinocytes

(A) Immunostaining of SCCA-related molecules in mouse keratinocytes by anti-Serpinb3a serum or pre-immune serum is shown. The fluorescence images are depicted.

(B) Culture media were prepared from Serpinb3a- or Serpinb3b-transfected HEK293T cells or mouse keratinocytes, and then immunoprecipitates of anti-Serpin3a serum were subjected to Western blotting using anti-Serpinb3a serum.



COSMO BIO Co., LTD.

Inspiration for Life Science

Cross reactivity

Mouse

Storage

Store below -20°C (below -70°C for prolonged storage).

Aliquot to avoid cycles of freeze/thaw.

References

1) Sakata, Y et al., Biochem. Biophys. Res. Commun. 324:1340-1345, 2004

For research use only. Not for clinical diagnosis.



COSMO BIO Co., LTD.

Inspiration for Life Science

TOYO 2CHOME, KOTO-KU, TOKYO, 135-0016, JAPAN

URL: <http://www.cosmobio.co.jp>

e-mail: export@cosmobio.co.jp

[Outside Japan] Phone : +81-3-5632-9617

[国内連絡先] Phone : +81-3-5632-9610

FAX : +81-3-5632-9618

FAX : +81-3-5632-9619